

# TI Designs – Precision

## Single-Supply Thermocouple Amplifier With RTD Based Cold-Junction Compensation Reference Design



### TI Designs - Precision

TI Designs – Precision are analog solutions created by analog experts at TI. Verified designs offer the theory, component selection, simulation, complete PCB schematics and layouts, bill of materials, and measured performance of useful circuits. Circuit modifications that help to meet alternate design goals are detailed.

### Circuit Description

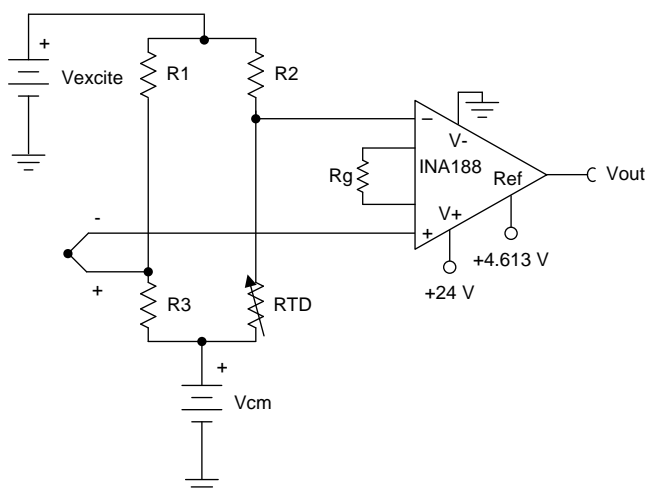
This TI Design uses a thermocouple to measure temperatures from  $-50^{\circ}\text{C}$  to  $+500^{\circ}\text{C}$ . The design uses cold-junction compensation to reduce errors associated with changes in the cold-junction temperature of the thermocouple. The design operates on a single 24-V supply and has a linear-output range of 250 mV to 5 V.

### Design Resources

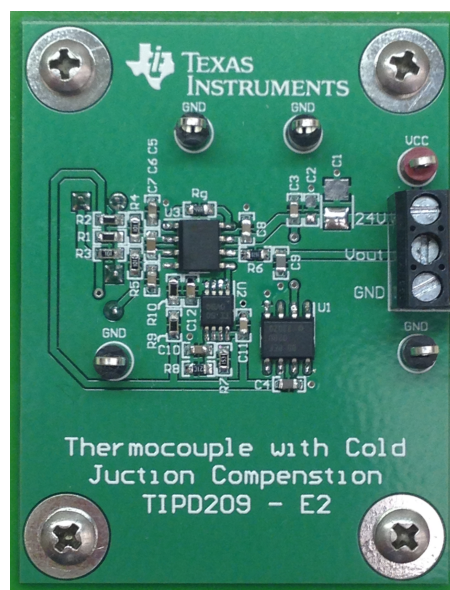
<a href="#">TIPD209</a>	Design Folder
<a href="#">TINA-TI™</a>	SPICE Simulator
<a href="#">INA188</a>	Product Folder
<a href="#">OPA2317</a>	Product Folder
<a href="#">REF02</a>	Product Folder



[ASK Our E2E Experts](#)



Copyright © 2016, Texas Instruments Incorporated



An IMPORTANT NOTICE at the end of this TI reference design addresses authorized use, intellectual property matters and other important disclaimers and information.

TINA-TI is a trademark of Texas Instruments.

## 1 Design Summary

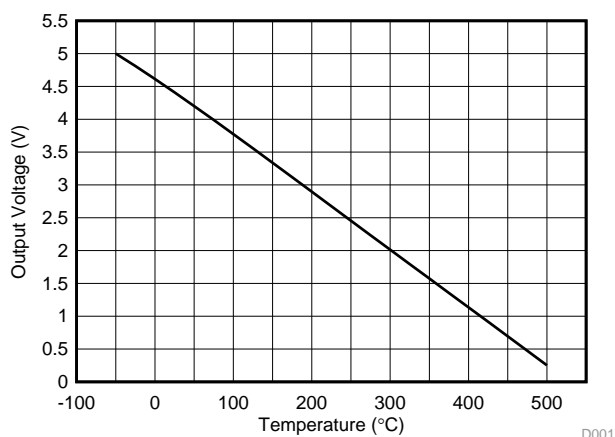
The following list details the design requirements:

- 6-V to 36-V supply voltage
- 24-V supply voltage
- 250-mV to 5-V output
- 2.6-V common-mode voltage
- 5-V excitation voltage
- $-50^{\circ}\text{C}$  to  $+500^{\circ}\text{C}$  hot-junction temperature
- $0^{\circ}\text{C}$  to  $75^{\circ}\text{C}$  cold-junction temperature

Table 1 lists the design goals and performance. Figure 1 shows the measured transfer function of the design.

**Table 1. Comparison of Design Goals, Calculation and Measured Performance**

	GOAL	CALCULATED (TYP)	MEASURED (% FSR)
<b>Total error (% FSR)</b>	$\pm 0.3\%$ ( $1.65^{\circ}\text{C}$ )	0.229% ( $1.26^{\circ}\text{C}$ )	$-0.037\%$ ( $-0.2035^{\circ}\text{C}$ )
<b>Accuracy of cold-junction comparison</b>	$\pm 3\%$ ( $16.5^{\circ}\text{C}$ )	$-2.074\%$ ( $11.41^{\circ}\text{C}$ )	$-2.12\%$ ( $11.66^{\circ}\text{C}$ )

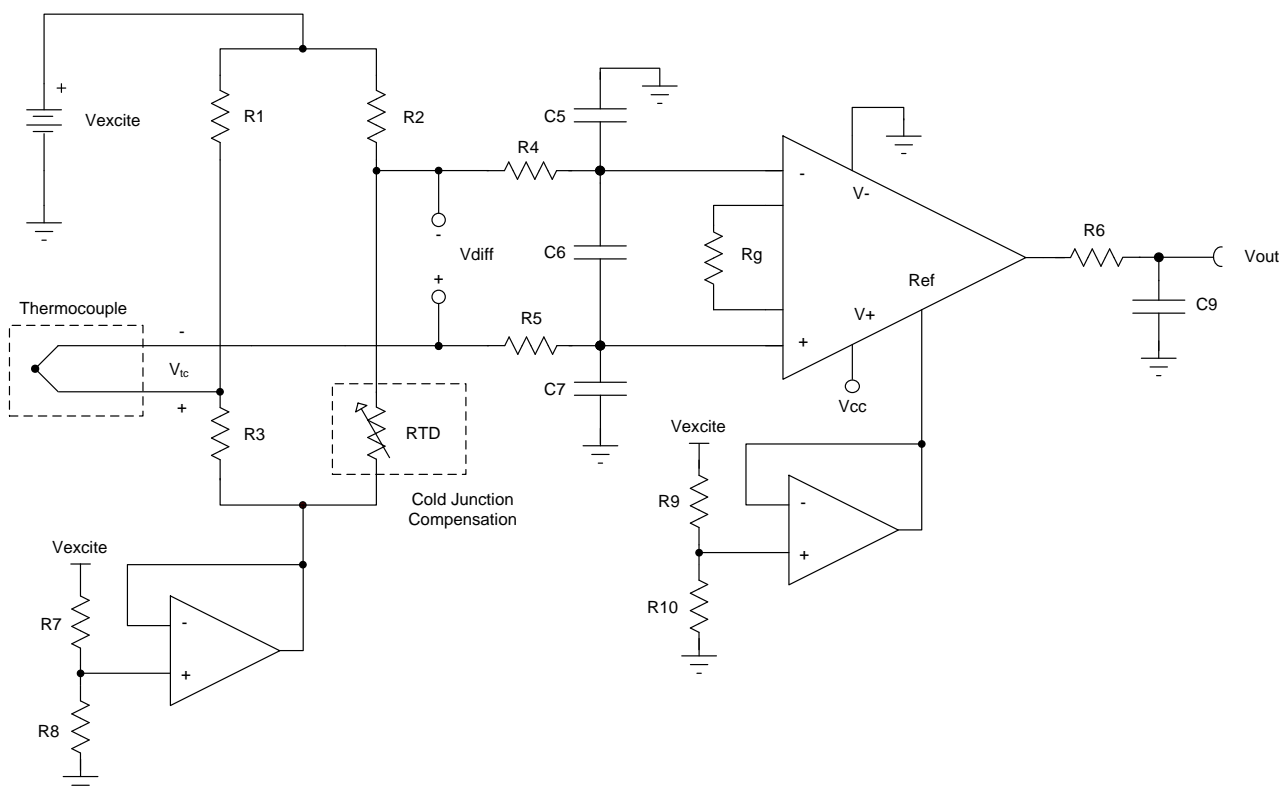


**Figure 1. Output Voltage versus Hot-Junction Temperature**

## 2 Theory of Operation

### 2.1 Thermocouple Measurement Topology

A thermocouple is a temperature sensor that produces a voltage that is dependent on the temperature difference between the hot junction and cold junction. The thermocouple is placed in the circuit configuration shown in Figure 2 to condition the voltage produced by the thermocouple ( $V_{tc}$ ).



Copyright © 2016, Texas Instruments Incorporated

**Figure 2. Thermocouple With Cold Junction Compensation Measurement Topology**

Equation 1 shows the transfer function of the circuit shown in Figure 2.

$$V_{out} = V_{diff} \times G + V_{ref}$$

Where:

- $V_{out}$  = the output voltage of the amplifier
- $V_{diff}$  = the differential-input voltage of the amplifier
- $G$  = the gain of the amplifier
- $V_{ref}$  = the reference voltage of the amplifier

(1)

Use Equation 2 to calculate the differential-input voltage.

$$V_{diff} = \frac{(R_{RTD}R_1 - R_2R_3)(V_{cm} - V_{excite})}{R_1R_2 + R_{RTD}R_1 + R_2R_3 + R_{RTD}R_3} - V_{tc}$$

(2)

## 2.2 Cold Junction Compensation

Cold-junction compensation is used to correct for a change in thermocouple voltage because of a change in the cold-junction temperature, but does not correct for linearity errors of the sensor. The resistance-temperature detector (RTD) shown in [Figure 2](#) measures the cold-junction temperature and changes the resistance based on the cold-junction temperature. To compensate for the change in thermocouple voltage, the change in voltage across the RTD must be equal to the change in thermocouple voltage. [Equation 3](#) shows the change in thermocouple voltage equal to the change in voltage across the RTD.

$$V_{SB} = \frac{(V_{excite} - V_{cm})}{R_2} \times \alpha$$

Where:

- $V_{SB}$  = the Seebeck coefficient of the thermocouple in V/°C units
  - $\alpha$  = the temperature coefficient of the RTD in  $\Omega/^\circ\text{C}$  units
- (3)

Use [Equation 4](#) to calculate the value for the compensation resistor ( $R_2$ ).

$$R_2 = \frac{(V_{excite} - V_{cm})}{V_{SB}} \times \alpha$$
(4)

Resistors  $R_1$ ,  $R_2$ , and  $R_3$  must be selected so that the bridge is balanced at a cold-junction temperature of 0°C.  $R_1$  must be set equal to  $R_2$ , and  $R_3$  must be set equal to the resistance of the RTD at 0°C ( $R_{RTD @ 0^\circ\text{C}}$ ). Use [Equation 5](#) and [Equation 6](#) to determine how to select the resistors in the bridge.

$$R_1 = R_2$$
(5)

$$R_3 = R_{RTD @ 0^\circ\text{C}}$$
(6)

## 2.3 Filtering

### 2.3.1 Common Mode and Differential Input Filter

Input filters are used in this design to reduce the noise that is fed into the instrumentation amplifier. Because the voltage produced by the thermocouple is a DC voltage, the cutoff frequencies of the filters must be set near DC to maximize filtered noise.

The cutoff frequency of the differential-input filter must be set to greater than 20 times the cutoff frequency of the common-mode filter to prevent common-mode noise from being translated to a differential signal. These cutoff frequencies are achieved by sizing the differential capacitor to be 10 times the size of the common-mode capacitors. Use [Equation 7](#) to calculate the common-mode filter cutoff frequency ( $f_{cm}$ ), and use [Equation 8](#) to calculate the differential-filter cutoff frequency ( $f_{diff}$ ).

$$f_{cm} = \frac{1}{2 \times \pi \times R_4 \times C_5}$$
(7)

$$f_{diff} = \frac{1}{2 \times \pi \times (R_4 + R_5) \times \left( C_6 + \frac{C_5}{2} \right)}$$
(8)

### 2.3.2 Output Filter

An output filter is used in this design to reduce noise on the output of the instrumentation amplifier. Use [Equation 9](#) to calculate the cutoff frequency of the output filter.

$$f_{out} = \frac{1}{2 \times \pi \times R_6 \times C_9}$$
(9)



## 2.4 Gain

The instrumentation amplifier amplifies the input-differential voltage to create an output-voltage swing of 250 mV to 5 V. Use [Equation 10](#) to calculate the required gain of the instrumentation amplifier.

$$G = \frac{V_{\text{out\_max}} - V_{\text{out\_min}}}{V_{\text{diff\_max}} - V_{\text{diff\_min}}} = \frac{5 \text{ V} - 250 \text{ mV}}{2.431 \text{ mV} - (-27.393 \text{ mV})} = 159.3 \text{ V / V} \quad (10)$$

## 2.5 Reference Voltage

A reference voltage is supplied to the instrumentation amplifier to offset negative-input differential voltages produced by the thermocouple and cold-junction compensation. Use [Equation 11](#) to calculate the reference voltage.

$$V_{\text{ref}} = V_{\text{out\_min}} - V_{\text{diff\_min}} \times G = 250 \text{ mV} - (-27.393 \text{ mV}) \times 159.3 \text{ V / V} = 4.614 \text{ V}$$

Where:

- $V_{\text{out\_min}}$  = minimum-output voltage
  - $V_{\text{diff\_min}}$  = minimum-differential input
- (11)

### 3 Component Selection

#### 3.1 Instrumentation Amplifier

The INA188 instrumentation amplifier was selected for this design because of the low drift, low offset, and high supply-voltage specifications.

#### 3.2 Reference Voltage Supply

The REF02B was chosen to supply the OPA2317, the common-mode voltage divider, and the INA188 reference-voltage divider because it has low drift, high-accuracy specifications.

#### 3.3 Common Mode Voltage

The common-mode voltage is 2.6 V to allow the output of the instrumentation amplifier to swing from 250 mV to 5 V. The common-mode voltage is set by using a voltage divider that uses the 5-V supply from the REF02, resistor  $R_7$ , and resistor  $R_8$ . Resistors  $R_7$  and  $R_8$  are 15.0 k $\Omega$  and 16.2 k $\Omega$ , respectively. A tolerance of 0.1% was used for resistors  $R_7$  and  $R_8$  to reduce errors associated with the common-mode voltage. Figure 3 shows the common mode versus the output-voltage plot for the INA188 with a common-mode voltage of 2.6 V. With a common-mode voltage of 2.6 V, the INA188 is able to have an output swing of 220 mV to 9.37 V.

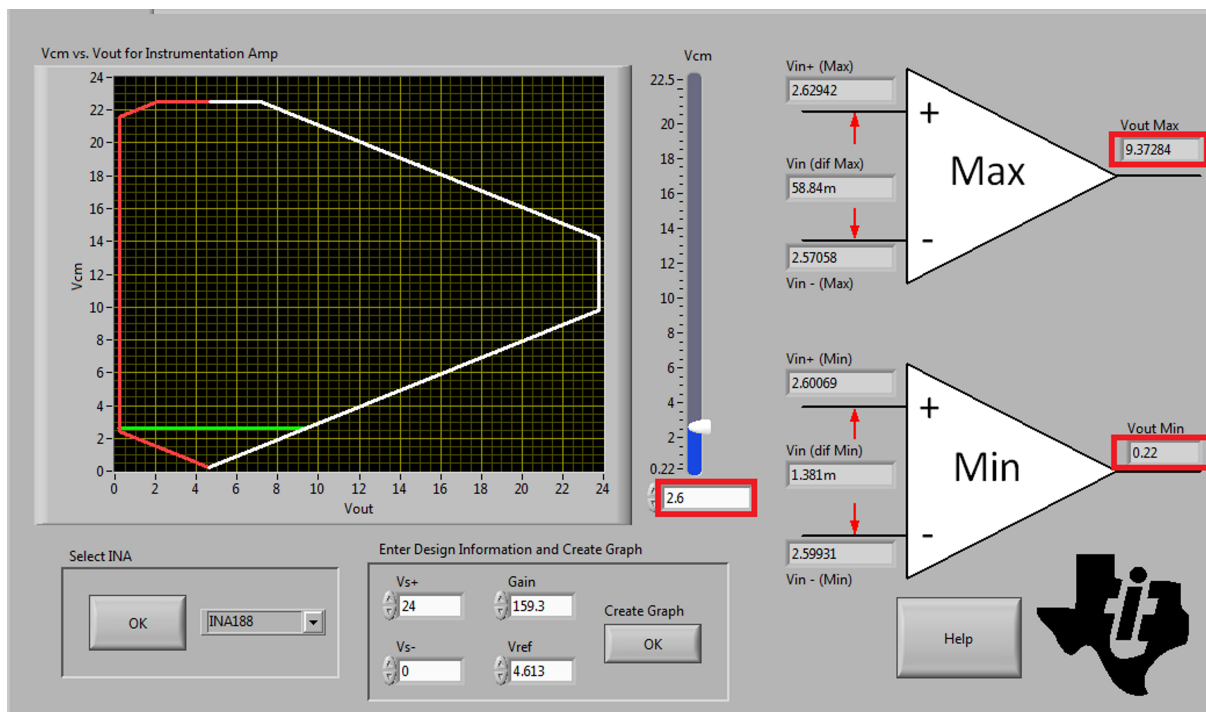


Figure 3. INA188 Common Mode versus Output Voltage

#### 3.4 Common Mode and Reference-Pin Buffer

The OPA2317 was chosen as the buffering amplifier for the common-mode voltage and reference pin of the instrumentation amplifier because it has low drift, low offset, dual package, and low cost.

#### 3.5 Reference Voltage

The INA188 reference voltage is 4.614 V. This was set with a voltage divider using the 5-V supply from the REF02 and resistors  $R_9$  and  $R_{10}$ , set to 1.15 k $\Omega$  and 13.7 k $\Omega$ , respectively. A tolerance of 0.1% was chosen for the resistors to reduce an offset error because of the reference voltage.

## 3.6 Passive Components

### 3.6.1 Gain Setting Resistor

The gain-setting resistor is calculated to be 315.9  $\Omega$ . Using the closest standard value,  $R_g$  is valued at 316  $\Omega$ . A tolerance of 0.1% was used for  $R_g$  to reduce the gain error because of the resistor. Use [Equation 12](#) to calculate the gain-setting resistor for the INA188. This equation is in the product datasheet.

$$R_g = \frac{50,000}{G - 1} = 315.9 \, \Omega \quad (12)$$

### 3.6.2 Resistors $R_1$ , $R_2$ , and $R_3$

Resistor  $R_3$  is 100  $\Omega$  to match the resistance of the RTD at 0°C. Resistor  $R_2$  is 18.7 k $\Omega$  as shown in [Equation 4](#). Resistor  $R_1$  is 18.7 k $\Omega$  to equal the resistance of  $R_2$ .

### 3.6.3 Common Mode and Differential Filter

The cutoff frequencies of the input common-mode and differential filter are 3.38 kHz and 161 Hz, respectively. To achieve these cutoff frequencies, resistors  $R_4$  and  $R_5$  are 100  $\Omega$ , and capacitors  $C_5$ ,  $C_6$ , and  $C_7$  are valued at 0.47  $\mu$ F, 4.7  $\mu$ F, and 0.47  $\mu$ F, respectively.

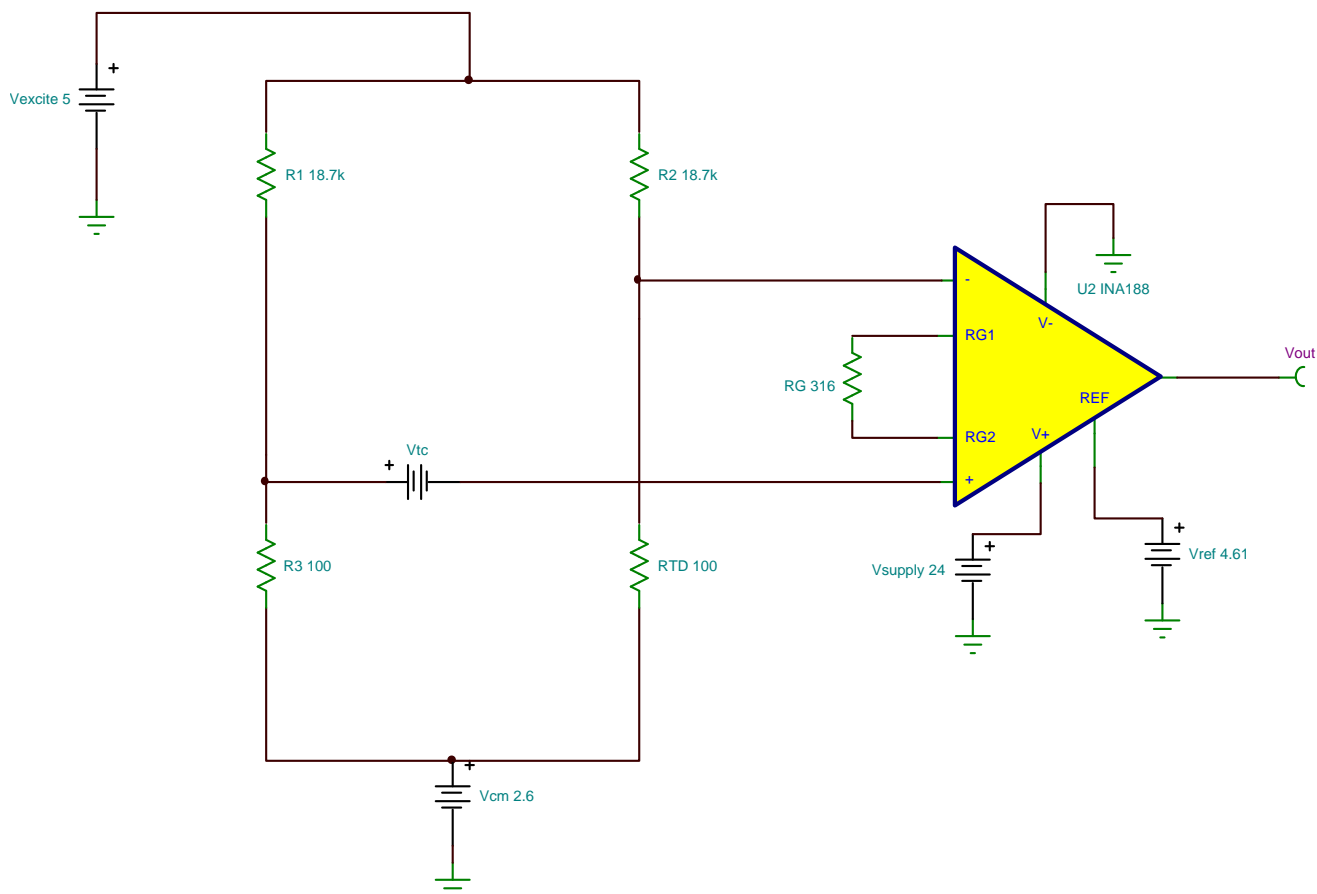
### 3.6.4 Output Filter

The output filter has a cutoff frequency of 100 Hz to filter out noise.  $R_6$  and  $C_9$  are 162  $\Omega$  and 10  $\mu$ F, respectively.

## 4 Simulation and Error Calculations

### 4.1 Simulation

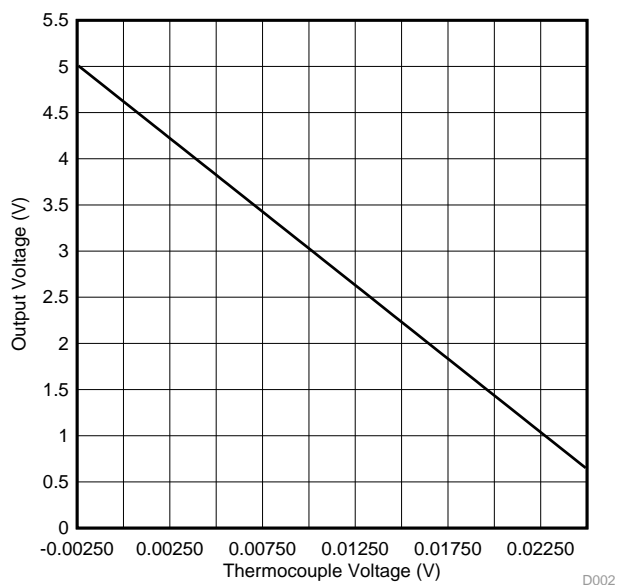
Figure 4 shows the TINA-TI™ circuit used for the simulation.



Copyright © 2016, Texas Instruments Incorporated

**Figure 4. TINA-TI Simulation Circuit**

Figure 5 displays the simulated-output voltage for a hot-junction temperature from  $-50^{\circ}\text{C}$  to  $+500^{\circ}\text{C}$ , and a cold-junction temperature of  $0^{\circ}\text{C}$ . To produce these simulated results,  $V_{tc}$  was swept from  $-2.431\text{ mV}$  to  $+27.393\text{ mV}$ , which corresponds to the voltage produced by the thermocouple with a hot-junction temperature ranging from  $-50^{\circ}\text{C}$  to  $+500^{\circ}\text{C}$ , and a cold-junction temperature of  $0^{\circ}\text{C}$ . The RTD resistance equals  $100\ \Omega$ , which corresponds to a cold-junction temperature of  $0^{\circ}\text{C}$ .



**Figure 5. Simulation Results**

## 4.2 Error Calculations

All error calculations can be found in [Appendix A](#).

### 4.2.1 Passive Component Errors

Table 2 shows how each passive component contributes to the error of the system given a cold-junction temperature of  $0^{\circ}\text{C}$ . For all of the calculations listed in Table 2, the passive components were adjusted to give the worst-possible outcome using the typical tolerance of the component.

**Table 2. Passive Component Errors**

	COMPONENT TOLERANCE	INPUT-REFERRED ERROR	INPUT-REFERRED ERROR (% FSR)
Bridge resistors $R_1$ , $R_2$ and $R_3$	0.1%	$12.6542\ \mu\text{V}$	0.0424%
INA188 reference-voltage resistors $R_9$ and $R_{10}$	0.1%	$1.341\ \mu\text{V}$	0.0045%
Common-mode resistors $R_7$ and $R_8$	0.1%	$4.921\ \mu\text{V}$	0.0165%

#### 4.2.2 INA188 Errors

Table 3 shows how the errors of the INA188 contribute to the error of the system. Typical specifications were used for all the calculations in the following table.

**Table 3. INA188 Errors**

	DATA-SHEET SPECIFICATION	INPUT-REFERRED ERROR (V)	INPUT-REFERRED ERROR (%FSR)
Input-offset voltage	(25 + 60/G) $\mu$ V	25.377 $\mu$ V	0.0851%
Gain error	0.06%	17.8944 $\mu$ V	0.06%
Common-mode rejection ratio (CMRR)	130 dB	99.67 $\mu$ V	0.01%

#### 4.2.3 REF02 Errors

Table 4 shows how the REF02 affects the excitation voltage, common-mode voltage divider, and INA188 reference-voltage divider. Because there is no effect on the differential-input voltage due to the REF02 at a cold-junction temperature of 0°C, the error calculations for the excitation voltage and common-mode voltage were calculated at a cold-junction temperature of 75°C. No typical specification is provided in the REF02 datasheet. Because of this, all calculations use a maximum specification.

**Table 4. REF02 Errors**

	DATA-SHEET SPECIFICATION	INPUT-REFERRED ERROR (V)	INPUT-REFERRED ERROR (%FSR)
Excitation voltage and common-mode voltage at CJ = 75°C	0.2%	13.711 $\mu$ V	0.0459%
INA188 reference voltage	0.2%	1.9418 mV	0.194%

#### 4.2.4 Total Error

Equation 13 shows how to calculate the total error of the system by taking the root-sum square (RSS) of each error term. The total error referred to the input is calculated as 0.229%. However, the calculated error has a maximum specification for the REF02 and a worst-case scenario for passive components. Because of this, the measured performance is expected to be better than the calculated error.

$$E_{\text{total}} = \sqrt{0.04243^2 + 0.0045^2 + 0.0165^2 + 0.0851^2 + 0.06^2 + 0.01^2 + 0.0459^2 + 0.194^2} = 0.229\% \quad (13)$$

#### 4.2.5 Cold Junction Compensation Accuracy

The cold-junction compensation accuracy equals –2.074%. The non-linearity of the thermocouple and the RTD increase as temperature decreases. As the cold-junction temperature deviates from 0°C, the cold-junction compensation accuracy decreases. Because of this, the calculation uses a hot-junction temperature of –50°C and a cold-junction temperatures of 0°C and 75°C.

## 5 PCB Design

### 5.1 PCB Layout

Figure 6 shows the PCB layout for this design. The traces to the input of the instrumentation amplifier were kept as short and balanced as possible to prevent a differential voltage from developing because of trace-impedance mismatch. The terminal blocks connecting the RTD and the thermocouple are placed on the bottom layer to minimize trace length that connects  $R_2$  and  $R_3$  to the terminal blocks. General layout guidelines (such as placing decoupling capacitors close to the devices and pouring a solid-ground plane) are used.

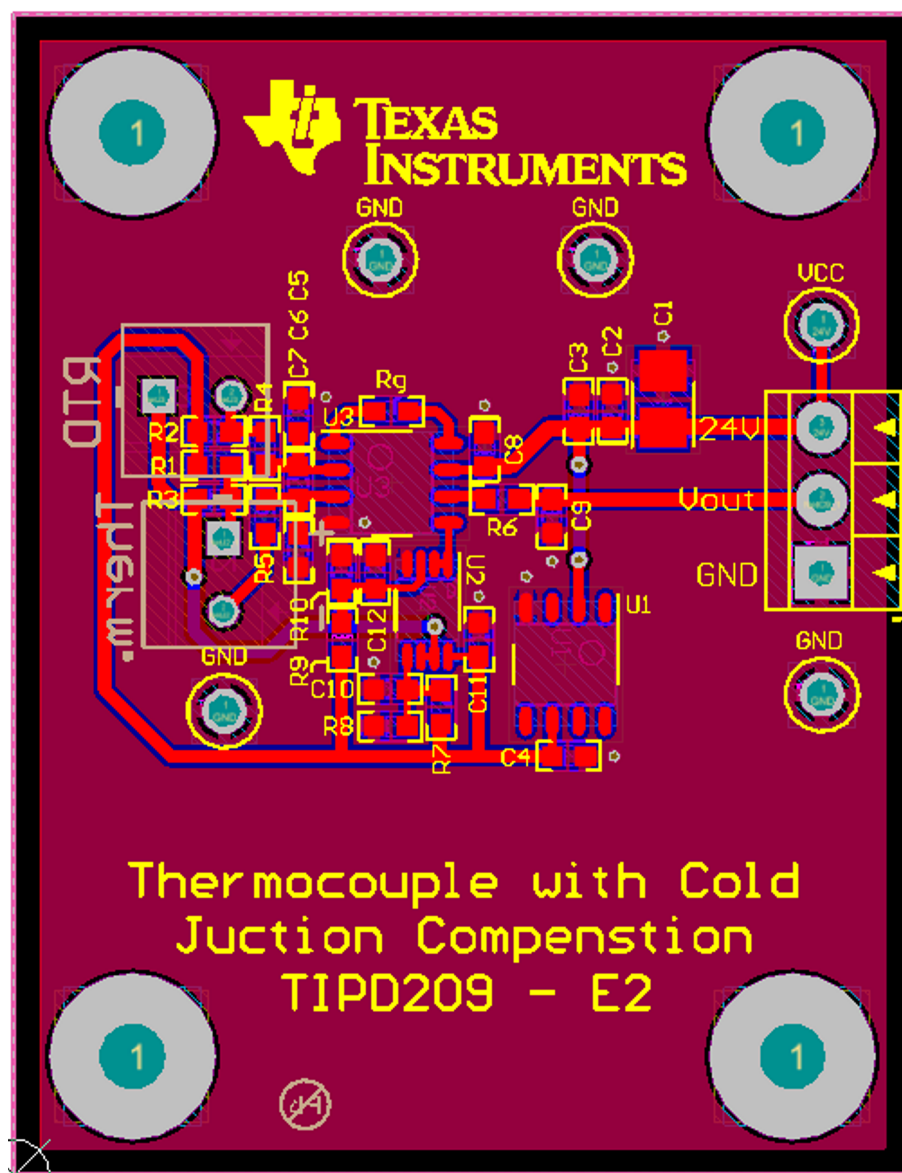


Figure 6. PCB Layout

## 6 Verification and Measured Performance

### 6.1 Output Voltage versus Hot-Junction Temperatures

Figure 7 shows the output voltage versus hot-junction temperatures from  $-50^{\circ}\text{C}$  to  $+500^{\circ}\text{C}$  with cold-junction temperatures of  $0^{\circ}\text{C}$ ,  $25^{\circ}\text{C}$ ,  $50^{\circ}\text{C}$ , and  $75^{\circ}\text{C}$ . To simulate the cold-junction temperature, ultra low-drift, high-precision resistors replaced the RTD based on the cold-junction temperature of each test. For the cold-junction temperatures of  $0^{\circ}\text{C}$ ,  $25^{\circ}\text{C}$ ,  $50^{\circ}\text{C}$ , and  $75^{\circ}\text{C}$ , resistance values of  $100\ \Omega$ ,  $110\ \Omega$ ,  $120\ \Omega$ , and  $130\ \Omega$  represented the RTD resistance.

To simulate the voltage produced by the thermocouple, a voltage source replaced the thermocouple. Because the voltage the thermocouple produces is dependent on the cold-junction temperature, the voltage applied in place of the thermocouple was adjusted for each cold-junction temperature. To simulate the non-linear effects of the thermocouple, a look-up table was used to determine the required voltage.

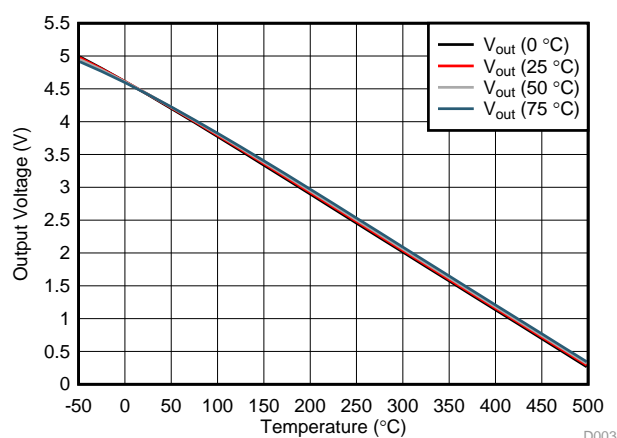


Figure 7. Output Voltage versus Hot-Junction Temperature

Figure 8 shows the total full-scale error at the cold-junction temperatures of  $0^{\circ}\text{C}$ ,  $25^{\circ}\text{C}$ ,  $50^{\circ}\text{C}$ , and  $75^{\circ}\text{C}$ . The errors from the inaccuracy of the cold-junction compensation have been removed from these results so the accuracy of the bridge, reference voltages, component tolerances, and the instrumentation amplifier can be verified independently of the cold-junction compensation circuitry.

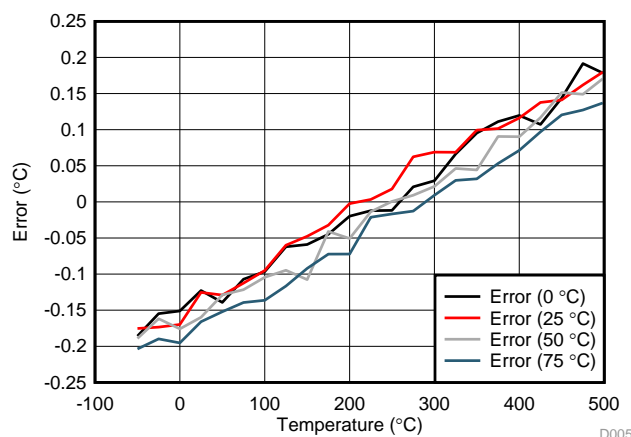
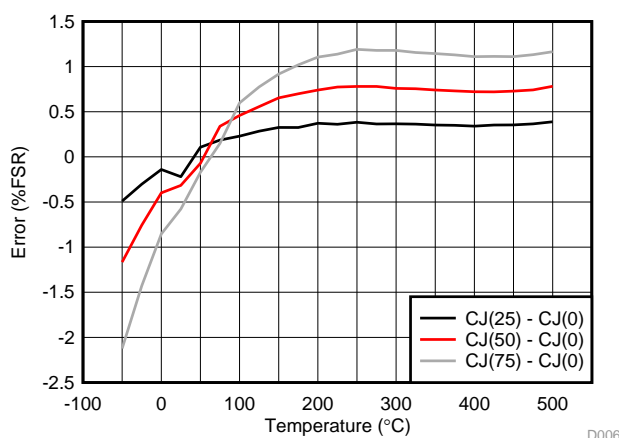


Figure 8. Total Full-Scale Error



Figure 9 shows the accuracy of the cold-junction compensation. This was calculated by subtracting the output voltage at a cold-junction temperature of 0°C from the output voltage at a cold-junction temperature of 25°C, 50°C, and 75°C, and then dividing by the full-scale output-voltage range. The non-linearity seen in the error is a result of non-linearity in the thermocouple- and RTD-transfer functions. Because the error of the cold-junction compensation is greater than the total full-scale error, the accuracy of the cold-junction compensation is more prominent than the accuracy of the system in cold-junction temperatures above 0°C.



**Figure 9. Cold-Junction Compensation Accuracy**

## 7 Modifications

### 7.1 Instrumentation Amplifier

The INA333 may be used for a low-drift, high-accuracy solution that requires a single 5-V supply. If the INA333 is used, the 5-V output from the REF02 may be used to supply the INA333. The INA826 may be used for a low-cost, high-voltage solution. However, the common mode of the instrumentation may need to be adjusted based on desired output swing and supply voltages.

### 7.2 Reference Voltage Supply

The REF5050 may be used to supply the reference voltage if a more accurate reference voltage is required. However, another supply voltage must be generated to reduce the 24-V supply down to 18 V.

### 7.3 Common Mode and Reference Voltage Buffer

The OPA2180 may be used to buffer the reference pin of the instrumentation amplifier and the common-mode voltage if a high voltage device is required in the application. The OPA2180 provides a high voltage, low drift, and low offset solution.

## 8 Design Files

### 8.1 Schematics

To download the schematics, see the design files at [TIPD209](#).

### 8.2 Bill of Materials

to download the bill of materials (BOM) for each board, see the design files at [TIPD209](#).

## 9 Acknowledgments

The author would like to thank Collin Wells for his technical contributions during this design.

## 10 References

1. *Omega Temperature Measurement Handbook 7th Edition*. 2010
2. Texas Instruments,  $V_{cm}$  vs  $V_{out}$  Calculator for Instrumentation Amplifiers, ([INA-CMV-CALC](#))

## 11 About the Author

**TIMOTHY CLAYCOMB** is an Analog Applications Engineer in the Precision Linear group at Texas Instruments. He earned his B.S. in Electrical Engineering from Michigan State University in 2013.

## Appendix A

### A.1 Passive Component Error Calculations

$$\text{FSR} = 2.431 \text{ mV} - (-27.393 \text{ mV}) = 29.824 \text{ mV} \quad (14)$$

$$V_{\text{diff\_ideal@0}^\circ\text{C}} = 0 \text{ V} \quad (15)$$

$$V_{\text{diff\_bridge\_passives}} = 12.6542 \text{ } \mu\text{V} \quad (16)$$

$$V_{\text{ref\_passives}} = 4.61301 \text{ V} \quad (17)$$

$$V_{\text{ref\_ideal}} = 4.6128 \text{ V} \quad (18)$$

$$V_{\text{diff\_ideal@75}^\circ\text{C}} = -3.80335 \text{ mV} \quad (19)$$

$$V_{\text{cm\_passives}} = 2.5969 \text{ V} \quad (20)$$

$$V_{\text{diff\_cm\_passives@75}^\circ\text{C}} = -3.80826 \text{ mV} \quad (21)$$

$$E_{\text{diff\_offset\_passives}} = \left| \frac{(V_{\text{diff\_bridge\_passives}} - V_{\text{diff\_ideal@0}^\circ\text{C}})}{\text{FSR}} \times 100 \right| = 0.04243\% \quad (22)$$

$$E_{\text{ref\_passives}} = \left| \frac{(V_{\text{ref\_passives}} - V_{\text{ref\_ideal}})}{G \times \text{FSR}} \times 100 \right| = 0.0045\% \quad (23)$$

$$E_{\text{diff\_offset\_cm\_passives@75}^\circ\text{C}} = \left| \frac{(V_{\text{diff\_cm\_passives@75}^\circ\text{C}} - V_{\text{diff\_ideal@75}^\circ\text{C}})}{\text{FSR}} \times 100 \right| = 0.0165\% \quad (24)$$

### A.2 INA188 Error Calculations

$$V_{\text{cm\_sys}} = 2.6 \text{ V} \quad (25)$$

$$V_{\text{cm\_spec}} = 12 \text{ V} \quad (26)$$

$$\text{INA}_{\text{GE}} = 0.06\% \quad (27)$$

$$\text{INA}_{\text{CMRR\_spec}} = 130 \text{ dB} = 316.23 \text{ nV} / V_a \quad (28)$$

$$E_{\text{offset}} = \frac{\left( 25 \pm \frac{60}{G} \right) \times 10^{-6}}{\text{FSR}} \times 100 = 0.0851\% \quad (29)$$

$$E_{\text{GE}} = \left( \frac{\text{INA}_{\text{GE}} \times \text{FSR}}{100} \right) = 17.8944 \text{ } \mu\text{V} \quad (30)$$

$$E_{\text{CMRR}} = \left| \frac{(V_{\text{cm\_spec}} - V_{\text{cm\_sys}})(\text{INA}_{\text{CMRR\_spec}})}{\text{FSR}} \times 100 \right| = 0.01\% \quad (31)$$

### A.3 REF02 Error Calculations

$$I_{NA\_ref\_ideal} = 4.6128 \text{ V} \quad (32)$$

$$I_{NA\_ref\_REF02} = 4.62202 \text{ V} \quad (33)$$

$$V_{diff\_REF02} = -3.81706 \text{ mV} \quad (34)$$

$$E_{I_{NA\_ref\_REF02}} = \left| \frac{I_{NA\_ref\_REF02} - I_{NA\_ref\_ideal}}{G \times FSR} \times 100 \right| = 0.194\% \quad (35)$$

$$E_{V_{diff\_REF02}} = \left| \frac{V_{diff\_REF02} - V_{diff\_ideal@75^\circ\text{C}}}{FSR} \times 100 \right| = 0.0459\% \quad (36)$$

### A.4 Accuracy of Cold-Junction Compensation

$$V_{diff@0^\circ\text{C}} = 2.431 \text{ mV} \quad (37)$$

$$V_{diff@75^\circ\text{C}} = 1.8125 \text{ mV} \quad (38)$$

$$E_{Cold\_Junction\_Comp} = \frac{V_{diff@0^\circ\text{C}} - V_{diff@75^\circ\text{C}}}{FSR} \times 100 = -2.074\% \quad (39)$$

### A.5 Conversions From %FSR to °C

$$E_{Volts} = \frac{E_{\%FSR}}{100} \times FSR \quad (40)$$

$$E_{^\circ\text{C}} = \frac{T_{range}}{FSR} \times E_{Volts} \quad (41)$$

## IMPORTANT NOTICE FOR TI REFERENCE DESIGNS

Texas Instruments Incorporated ("TI") reference designs are solely intended to assist designers ("Designer(s)") who are developing systems that incorporate TI products. TI has not conducted any testing other than that specifically described in the published documentation for a particular reference design.

TI's provision of reference designs and any other technical, applications or design advice, quality characterization, reliability data or other information or services does not expand or otherwise alter TI's applicable published warranties or warranty disclaimers for TI products, and no additional obligations or liabilities arise from TI providing such reference designs or other items.

TI reserves the right to make corrections, enhancements, improvements and other changes to its reference designs and other items.

Designer understands and agrees that Designer remains responsible for using its independent analysis, evaluation and judgment in designing Designer's systems and products, and has full and exclusive responsibility to assure the safety of its products and compliance of its products (and of all TI products used in or for such Designer's products) with all applicable regulations, laws and other applicable requirements. Designer represents that, with respect to its applications, it has all the necessary expertise to create and implement safeguards that (1) anticipate dangerous consequences of failures, (2) monitor failures and their consequences, and (3) lessen the likelihood of failures that might cause harm and take appropriate actions. Designer agrees that prior to using or distributing any systems that include TI products, Designer will thoroughly test such systems and the functionality of such TI products as used in such systems. Designer may not use any TI products in life-critical medical equipment unless authorized officers of the parties have executed a special contract specifically governing such use. Life-critical medical equipment is medical equipment where failure of such equipment would cause serious bodily injury or death (e.g., life support, pacemakers, defibrillators, heart pumps, neurostimulators, and implantables). Such equipment includes, without limitation, all medical devices identified by the U.S. Food and Drug Administration as Class III devices and equivalent classifications outside the U.S.

Designers are authorized to use, copy and modify any individual TI reference design only in connection with the development of end products that include the TI product(s) identified in that reference design. HOWEVER, NO OTHER LICENSE, EXPRESS OR IMPLIED, BY ESTOPPEL OR OTHERWISE TO ANY OTHER TI INTELLECTUAL PROPERTY RIGHT, AND NO LICENSE TO ANY TECHNOLOGY OR INTELLECTUAL PROPERTY RIGHT OF TI OR ANY THIRD PARTY IS GRANTED HEREIN, including but not limited to any patent right, copyright, mask work right, or other intellectual property right relating to any combination, machine, or process in which TI products or services are used. Information published by TI regarding third-party products or services does not constitute a license to use such products or services, or a warranty or endorsement thereof. Use of the reference design or other items described above may require a license from a third party under the patents or other intellectual property of the third party, or a license from TI under the patents or other intellectual property of TI.

TI REFERENCE DESIGNS AND OTHER ITEMS DESCRIBED ABOVE ARE PROVIDED "AS IS" AND WITH ALL FAULTS. TI DISCLAIMS ALL OTHER WARRANTIES OR REPRESENTATIONS, EXPRESS OR IMPLIED, REGARDING THE REFERENCE DESIGNS OR USE OF THE REFERENCE DESIGNS, INCLUDING BUT NOT LIMITED TO ACCURACY OR COMPLETENESS, TITLE, ANY EPIDEMIC FAILURE WARRANTY AND ANY IMPLIED WARRANTIES OF MERCHANTABILITY, FITNESS FOR A PARTICULAR PURPOSE, AND NON-INFRINGEMENT OF ANY THIRD PARTY INTELLECTUAL PROPERTY RIGHTS.

TI SHALL NOT BE LIABLE FOR AND SHALL NOT DEFEND OR INDEMNIFY DESIGNERS AGAINST ANY CLAIM, INCLUDING BUT NOT LIMITED TO ANY INFRINGEMENT CLAIM THAT RELATES TO OR IS BASED ON ANY COMBINATION OF PRODUCTS AS DESCRIBED IN A TI REFERENCE DESIGN OR OTHERWISE. IN NO EVENT SHALL TI BE LIABLE FOR ANY ACTUAL, DIRECT, SPECIAL, COLLATERAL, INDIRECT, PUNITIVE, INCIDENTAL, CONSEQUENTIAL OR EXEMPLARY DAMAGES IN CONNECTION WITH OR ARISING OUT OF THE REFERENCE DESIGNS OR USE OF THE REFERENCE DESIGNS, AND REGARDLESS OF WHETHER TI HAS BEEN ADVISED OF THE POSSIBILITY OF SUCH DAMAGES.

TI's standard terms of sale for semiconductor products (<http://www.ti.com/sc/docs/stdterms.htm>) apply to the sale of packaged integrated circuit products. Additional terms may apply to the use or sale of other types of TI products and services.

Designer will fully indemnify TI and its representatives against any damages, costs, losses, and/or liabilities arising out of Designer's non-compliance with the terms and provisions of this Notice.

Mailing Address: Texas Instruments, Post Office Box 655303, Dallas, Texas 75265  
Copyright © 2016, Texas Instruments Incorporated