

Using the AGC, DRC and Beep Generator Function in TLV320AIC3204/54/3100/10/11/20/36 Devices

Vikas Kumar Thawani

HPA-AIP-Audio Converters

ABSTRACT

The new AIC devices have the built-in feature of AGC, DRC, and the Beep Generator. Using these features requires initializing a group of control registers inside the TLV320AIC3204/3254/3100/3110/3111/3120/36 devices. This application report is intended to help the user how to handle these features and what are the applications of these features.

Contents

| | | |
|------------|------------------------------------|----|
| 1 | AGC | 2 |
| 1.1 | Introduction | 2 |
| 1.2 | AGC Parameters | 3 |
| 1.3 | Control Registers and Status | 4 |
| 1.4 | Example | 5 |
| 2 | DRC | 6 |
| 2.1 | Introduction | 6 |
| 2.2 | DRC Parameters | 7 |
| 2.3 | Control Registers and Status | 8 |
| 2.4 | Example | 8 |
| 3 | Beep Generator | 9 |
| 3.1 | Introduction | 9 |
| 3.2 | Beep Generator Parameters | 9 |
| 3.3 | Register Settings | 10 |
| 3.4 | Example | 10 |
| 4 | References | 11 |
| Appendix A | Sample Code | 12 |

List of Figures

| | | |
|---|---|---|
| 1 | AGC Function | 2 |
| 2 | A Snapshot From Control Software Showing GUI Settings for AGC Parameters..... | 3 |
| 3 | A Snapshot From Control Software Showing GUI Settings for DRC Parameters..... | 8 |
| 4 | A Snapshot From Control Software Showing GUI Settings for Beep Generator Parameters | 9 |

List of Tables

| | | |
|---|---|----|
| 1 | AGC Parameters Description..... | 3 |
| 2 | TLV320AIC3204/3254/36 AGC Parameter Settings | 4 |
| 3 | TLV320AIC3100/3110/3111/3120 AGC Parameter Settings..... | 4 |
| 4 | DRC HPF and LPF Coefficients for TLV320AIC3204/3254/36 | 7 |
| 5 | DRC HPF and LPF Coefficients for TLV320AIC3100/3110/3111/3120 | 7 |
| 6 | DRC Parameters Description..... | 7 |
| 7 | TLV320AIC3204/3254/36/3100/3110/3111/3120 DRC Parameter Settings | 8 |
| 8 | Beep Generator Parameters Description | 9 |
| 9 | TLV320AIC3204/3254/36/3100/3110/3111/3120 Beep Generator Parameter Settings | 10 |

I2C is a trademark of NXP B. V Corporation.

1 AGC

1.1 Introduction

The AGC feature is included for ADC recording. In TLV320AIC3100/3110/3111/3120, this feature is only present for the microphone input, but in devices like TLV320AIC3204/3254/36, this feature is included in the stereo ADC's and is applicable only for Microphone input. This feature helps the users to improve analog recording performance.

Automatic Gain control (AGC) is an algorithm that is used to maintain nominally constant output voltage at the output of Programmable gain Amplifier (PGA) that feeds the ADC. This smart feature is used when the amplitude of the input signal is varying dynamically and frequently, AGC can adjust the gain of PGA so that the output is held at a constant level (called Target level). Without AGC, the gain of PGA would have been manually changed for the frequently changing the input signal. An example application for AGC use is when a person speaking on phone is moving closer or far away from microphone so the input is either weak or loud. Use of AGC over fixed gain PGA thus helps in adjusting the signal at fixed level to meet the real-world conditions. AGC module uses low pass filtered version of input to calculate the absolute average of the signal and it operates at ADC sampling frequency rate.

Using the AGC feature built in TI devices requires loading up of proper registers either by I2C™ or SPI interface. This application note is intended to provide a detailed explanation and example-setup for using AGC in TI devices like TLV320AIC3204/3254, TLV320AIC3100/3110/3111/3120 and TLV320AIC36.

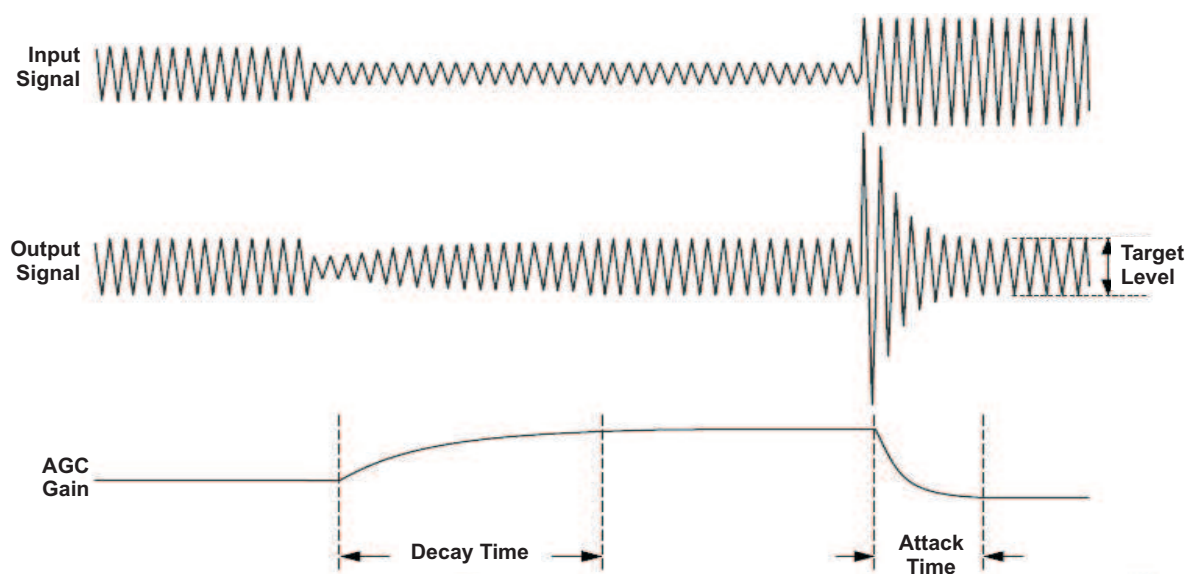


Figure 1. AGC Function

1.2 AGC Parameters

The AGC algorithm has different parameters which can be used depending upon the requirements of the user. The parameters and their description are given in [Table 1](#).

Table 1. AGC Parameters Description

| AGC PARAMETERS | DESCRIPTION |
|----------------------|--|
| Target Level | This represents the nominal output level that the AGC attempts to hold the ADC output signal. It is expressed relative to full scale range of the ADC range (in db) so it is recommended that the target level be set with enough margin to avoid clipping of loud signals. |
| Attack Time | This determines how quickly the AGC circuitry decreases the PGA gain when the input signal exceeds the target level. It is expressed in fractions of ADC sampling rates. |
| Decay time | This determines how quickly the AGC circuitry increases the PGA gain when the input signal falls below the target level. It is expressed in fractions of ADC sampling rates. |
| Noise Threshold | A threshold used to differentiate noise from very weak signals so that the PGA does not amplify the noise also. So is the signal is below this reference, it is considered as noise and the output of ADC is 0 db. |
| Maximum PGA gain | Allows the user to restrict the maximum gain of PGA. Can be used in very noisy environments when noise is greater than the set noise threshold so as not to amplify the noise too much. |
| Hysteresis | Hysteresis around the noise threshold avoids fluctuation of ADC output between target and no signal when the signal is around noise threshold. So the signal around noise threshold, it has to rise above the hysteresis to be amplified to target level. Reverse if a signal is around noise threshold, it has to fall below hysteresis to be considered as noise and set to 0db. |
| Noise Debounce time | If the signal level falls below noise threshold level, it has to stay there for a time greater than Noise debounce time, only then the ADC output is set to 0 to avoid false noise artifact effects. |
| Signal Debounce time | If the signal level goes above the noise threshold level, it has to stay there for at least Signal debounce time to allow PGA to switch to target level to prevent false switching. |

For example, if the noise threshold selected is low, the larger noise may be picked up and amplified with a large gain. If the noise threshold selected is set thigh, the weaker signal may be considered by the AGC as noise and fail to be amplified. Similarly, if the maximum gain applicable variable is kept too high, then any noise which is above the noise threshold may increae and create a noisy output; but if it is kept low, normal speech signals may not be gained up enough to reach the target gain level at the output.

The selection of the AGC variables depends on the practical application and environment. Some variables become more important under certain conditions. For example, if the input signal is often hovering around the noise threshold, hysteresis and debounce time become critical.

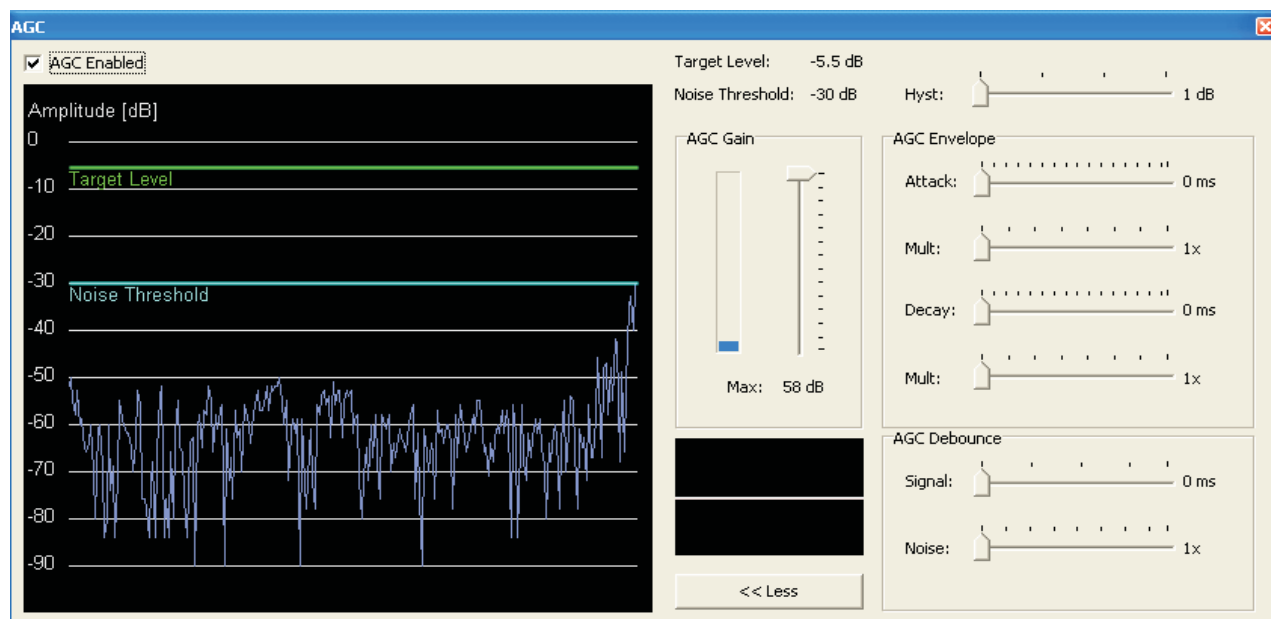


Figure 2. A Snapshot From Control Software Showing GUI Settings for AGC Parameters

1.3 Control Registers and Status

The AGC parameters mentioned in Table 2 should be written with proper values at different locations in memory of AIC devices. Table 2 shows which parameters are present at what locations for devices like TLV320AIC3204/3254/36. Table 3 for devices like TLV320AIC3100/3110/3111/3120.

Table 2. TLV320AIC3204/3254/36 AGC Parameter Settings⁽¹⁾

| AGC Variable | Control Register Left ADC | Control Register Right ADC | Bit |
|---|---|---|-----------|
| AGC enable | Page0, Register86 | Page0, Register94 | D(7) |
| Target Level(dB) | Page0, Register86 | Page0, Register94 | D(6:4) |
| Hysteresis(dB) | Page0, Register87 | Page0, Register95 | D(7:6) |
| Attack Time ⁽²⁾ | Page0, Register89 | Page0, Register97 | D(7:0) |
| Decay time ⁽²⁾ | Page0, Register90 | Page0, Register98 | D(7:0) |
| Noise Threshold(dB) | Page0, Register87 | Page0, Register95 | D(5:1) |
| MaxPGA applicable(dB) | Page0, Register88 | Page0, Register96 | D(6:0) |
| Noise Debounce time ⁽²⁾ | Page0, Register91 | Page0, Register99 | D(4:0) |
| Signal Debounce time ⁽²⁾ | Page0, Register92 | Page0, Register100 | D(3:0) |
| Gain Applied by AGC(dB) ⁽³⁾ | Page0, Register93 | Page0, Register101 | D(7:0) |
| AGC noise threshold flag ⁽³⁾ | Page0, Register45(sticky flag) ⁽⁴⁾ Page0, Register47(non-sticky-flag) | Page0, Register45(sticky flag) ⁽⁴⁾ Page0, Register47(non-sticky-flag) | D(6:5) |
| AGC saturation flag ⁽³⁾ | Page0, Register36 | Page0, Register36 | D(5),D(1) |
| ADC saturation flag ⁽³⁾ | Page0, Register42(sticky flag) ⁽⁴⁾ Page0, Register43(non-sticky-flag) | Page0, Register42(sticky flag) ⁽⁴⁾ Page0, Register43(non-sticky-flag) | D(3:2) |

⁽¹⁾ For the range of values that can be applied to these parameters, see data sheet of the device under test.

⁽²⁾ These times are as a function of ADC sampling clock periods.

⁽³⁾ These parameters are just read-only.

⁽⁴⁾ Sticky flag bits. These are read-only bits. They are automatically cleared once they are read and are set only if the source trigger occurs again.

Status Variables

- Gain applied by AGC** can be read by Register93 and Register101.
- AGC noise threshold Flag** is a read-only flag indicating that the input signal has levels lower than the Noise Threshold, and thus is detected as noise (or silence). In such a condition the AGC applies a gain of 0 dB.
- AGC saturation flag** is a read-only flag indicating that the ADC output signal has not reached its Target Level. However, the AGC is unable to increase the gain further because the required gain is higher than the Maximum Allowed PGA gain. Such a situation can happen when the input signal has very low energy and the Noise Threshold is also set very low. When the AGC noise threshold flag is set, the status of AGC saturation flag should be ignored.
- ADC Saturation flag** is a read-only flag indicating an overflow condition in the ADC channel. On overflow, the signal is clipped and distortion results. This typically happens when the AGC Target Level is kept very high and the energy in the input signal increases faster than the Attack Time.

Table 3. TLV320AIC3100/3110/3111/3120 AGC Parameter Settings⁽¹⁾⁽²⁾

| AGC Variable | Control Register Left ADC | Bit |
|----------------------------|---------------------------|--------|
| AGC enable | Page0, Register86 | D(7) |
| Target Level(dB) | Page0, Register86 | D(6:4) |
| Hysteresis(dB) | Page0, Register87 | D(7:6) |
| Attack Time ⁽³⁾ | Page0, Register89 | D(7:0) |
| Decay time ⁽³⁾ | Page0, Register90 | D(7:0) |
| Noise Threshold(dB) | Page0, Register87 | D(5:1) |

⁽¹⁾ For the range of values that can be applied to these parameters, see data sheet of the device under test

⁽²⁾ For explanation to sticky flag and other flags, see above this table.

⁽³⁾ These times are as a function of ADC sampling clock periods.

Table 3. TLV320AIC3100/3110/3120 AGC Parameter Settings⁽¹⁾⁽²⁾
(continued)

| AGC Variable | Control Register Left ADC | Bit |
|---|---|--------|
| MaxPGA applicable(dB) | Page0, Register88 | D(6:0) |
| Noise Debounce time ⁽³⁾ | Page0, Register91 | D(4:0) |
| Signal Debounce time ⁽³⁾ | Page0, Register92 | D(3:0) |
| Gain Applied by AGC(dB) ⁽⁴⁾ | Page0, Register93 | D(7:0) |
| AGC noise threshold flag ⁽⁴⁾ | Page0, Register45(sticky flag) ⁽⁵⁾ | D(6) |
| AGC saturation flag ⁽⁴⁾ | Page0, Register36 | D(5) |
| ADC saturation flag ⁽⁴⁾ | Page0, Register39(sticky flag) ⁽⁵⁾ | D(3) |

⁽⁴⁾ These parameters are just read-only.

⁽⁵⁾ Sticky flag bits. These are read-only bits. They are automatically cleared once they are read and are set only if the source trigger occurs again

1.4 Example

Note that for writing to the corresponding register of that variable, just use the syntax w AIC_address Register_address Data where AIC_address is the address of the device under use in Hex, Register_address and Data in Hex.

1. When the noise is very low as compared to the signal, the following values can be used in the application.

- (a) Target gain = -5.5 dB
- (b) Attack time = 20 ms and decay time = 500 ms
- (c) Noise threshold = -90 dB
- (d) Maximum gain applicable = 50 dB
- (e) Hysteresis disabled.
- (f) Debounce time from normal to silence = 0 ms
- (g) Debounce time from silence to normal = 0 ms

Note that with Example 1 settings, the background noise may become considerable when noise is beyond the noise threshold because the maximum gain applicable is higher (+50 dB) and thus big noise may get gained up with high gain.

2. When noise is relatively large, the following values may be used in the application

- (a) Target gain = -10 dB
- (b) Attack time = 20 ms and decay time = 500 ms
- (c) Noise threshold = -90 dB
- (d) Maximum gain applicable= 40 dB
- (e) Hysteresis = 2 dB
- (f) Debounce time from normal to silence = 2 ms
- (g) Debounce time from silence to normal = 0 ms.

Note that the Example 2 settings, even though the noise is above the noise threshold, will not be as much gain as in Example 1 as the Maximum gain applicable has been reduced.

Script for the above example assuming TLV320AIC3111 device is in use assuming Fs=44.1kHz with:

```
w 30 00 00 #go to page 0
w 0 56 A0 3#Enable AGC, set Target gain = -10 dB
w 30 57 7E #set hysteresis = 2 dB, Noise threshold = -90 dB
w 30 58 50 #set Maximum gain = 40 dB
w 30 59 08 #set attack time = 20 ms
w 30 5A 32 #Decay time = 500 ms
w 30 5B 00 #Noise debounce time = 0 ms
w 30 5C 06 #signal debounce time = 2 ms
```

ADC gain and powering up is not taken into account here, That part of code must be added.

2 DRC

2.1 Introduction

Dynamic Range compression (DRC) is included at the DAC side of TI codec devices that monitors the output of DAC and adjusts the gain of DAC so as to avoid clipping of loud signals. So when the output of DAC is low, DRC increases the applied gain so as to make the signal sound loud. Contrary to this, if a peaking signal is detected it autonomously reduces the applied gain to avoid the hard clipping. This results in sounds more pleasing to the ear as well as sounding louder during nominal periods. DRC typically works on the filtered version of the input signal. As the low frequency signals contain no audio information, but they have significant amount of energy content. So the input of DAC is fed to a high pass filter and then the output of this high pass filter is fed to a low pass filter. The output of low pass filter is used in the energy estimation of the signal and the output of high pass filter is fed to one of the processing blocks of DAC. These filters are implemented as first order IIR filters given by:

For TLV320AIC3204/3254/36

$$H_{HPF}(z) = \frac{N_0 + N_1 z^{-1}}{2^{23} - D_1 z^{-1}}$$

$$H_{LPF}(z) = \frac{N_0 + N_1 z^{-1}}{2^{23} - D_1 z^{-1}}$$

For TLV320AIC3100/3110/3111/3120

$$H_{HPF}(z) = \frac{N_0 + N_1 z^{-1}}{2^{15} - D_1 z^{-1}}$$

$$H_{LPF}(z) = \frac{N_0 + N_1 z^{-1}}{2^{15} - D_1 z^{-1}}$$

The co-efficient No, N1, D1 are user programmable. These are 16 bits(2 Registers wide) for TLV320AIC3100/3110/3111/3120 and 24 bits(3 Registers wide) for TLV320AIC3204/3254.

Table 4. DRC HPF and LPF Coefficients for TLV320AIC3204/3254/36

| Coefficient | Location |
|-------------|-------------------------------|
| HPF N0 | C71 Page46, Register 52 to 54 |
| HPF N1 | C72 Page46, Register 56 to 58 |
| HPF D1 | C73 Page46, Register 60 to 62 |
| LPF N0 | C74 Page46, Register 64 to 66 |
| LPF N1 | C75 Page46, Register 68 to 70 |
| LPF N2 | C76 Page46, Register 72 to 74 |

Table 5. DRC HPF and LPF Coefficients for TLV320AIC3100/3110/3111/3120

| Coefficient | Location |
|-------------|-------------------------------|
| HPF N0 | C71 Page9, Register 14 and 15 |
| HPF N1 | C72 Page9, Register 16 and 17 |
| HPF D1 | C73 Page9, Register 18 and 19 |
| LPF N0 | C74 Page9, Register 20 and 21 |
| LPF N1 | C75 Page9, Register 22 and 23 |
| LPF N2 | C76 Page9, Register 24 and 25 |

2.2 DRC Parameters

The DRC algorithm has different parameters which can be used depending upon the requirements of the user. The parameters and their description are given in [Table 6](#).

Table 6. DRC Parameters Description

| Variable | Description |
|-------------|--|
| PGA gain | Depending upon the threshold set, DAC input is gained up this amount if input is less than threshold. |
| Threshold | DRC threshold represents the level of the DAC playback signal at which the gain compression becomes active. Keeping the DRC threshold value too high may not leave enough time for the DRC block to detect peaking signals, and can cause excessive distortion at the outputs. Keeping the DRC threshold value too low can limit the perceived loudness of the output signal. |
| Hysteresis | It is a programmable window around the programmed DRC threshold that must be exceeded for the disabled DRC to become enabled, or the enabled DRC to become disabled. DRC hysteresis feature prevents the rapid activation and de-activation of gain compression in the DRC in cases when the output of the DAC digital volume control rapidly fluctuates in a narrow region around the programmed DRC threshold. |
| Hold time | When the input signal to the DAC falls below the threshold, it has to stay below it for atleast the hold time to enable gaining it up. This parameter helps in minimizing audible artifact effects. |
| Attack rate | When the output of the DAC digital volume control exceeds the programmed DRC threshold, the gain applied in the DAC digital volume control is progressively reduced to avoid the signal from saturating the channel. This process of reducing the applied gain is called attack. To avoid audible artifacts, the gain is reduced slowly with a rate equaling the attack rate. |
| Decay rate | When the DRC detects a reduction in output signal swing beyond the programmed DRC threshold, the DRC enters a decay state, where the applied gain in the digital-volume control is gradually increased to programmed values. To avoid audible artifacts, the gain is slowly increased with a rate equal to the decay rate. |

Selection of the values for each of these parameters strictly depends upon application and environmental conditions.

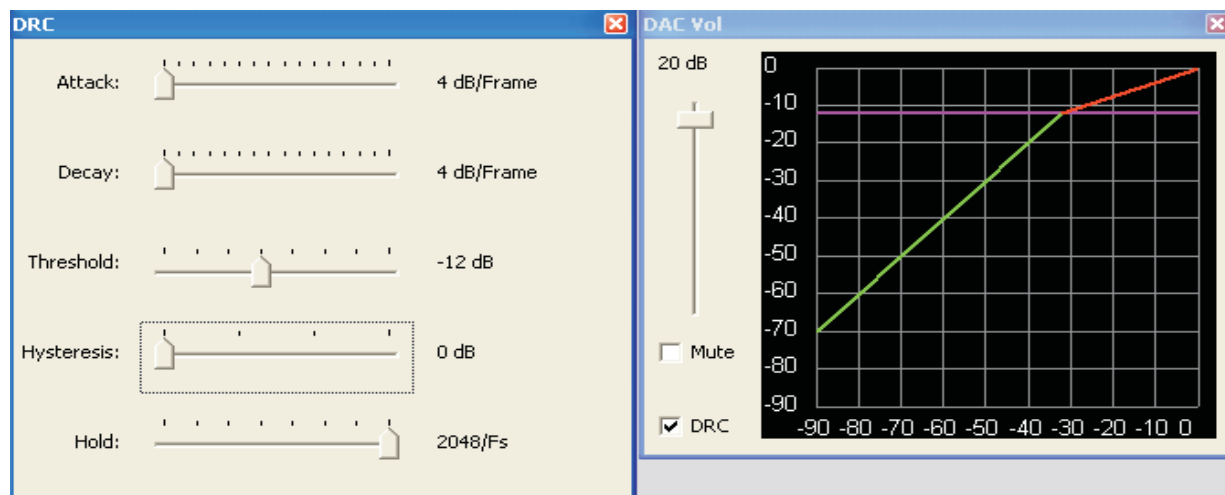


Figure 3. A Snapshot From Control Software Showing GUI Settings for DRC Parameters

2.3 Control Registers and Status

The DRC parameters mentioned in Table 6 should be written with proper values at different locations in memory of AIC devices. Table 7 shows which parameters are present at what locations for devices like TLV320AIC3204/3254/36/3100/3110/3111/3120.

Table 7. TLV320AIC3204/3254/36/3100/3110/3111/3120 DRC Parameter Settings⁽¹⁾

| DRC Variable | Control Register Left DAC | Control Register Right DAC | Bit |
|--|--|--|--------|
| DRC enable | Page0, Register 68 | Page0, Register 68 | D(6:5) |
| Threshold(dB) | Page0, Register 68 | Page0, Register 68 | D(4:2) |
| Attack time ⁽²⁾ | Page0, Register 70 | Page0, Register 70 | D(7:4) |
| Decay time ⁽²⁾ | Page0, Register 70 | Page0, Register 70 | D(3:0) |
| Hold time(ms) | Page0, Register 69 | Page0, Register 69 | D(6:3) |
| Hysteresis(dB) | Page0, Register 68 | Page0, Register 68 | D(1:0) |
| DAC gain(dB) | Page0, Register 65 | Page0, Register 66 | D(7:0) |
| DRC signal threshold flag ⁽³⁾ | Page0, Register44(sticky) Page0, Register46(non-sticky) | Page0, Register44(sticky) Page0, Register46(non-sticky) | D(3:2) |

⁽¹⁾ For the range of values that can be applied to these parameters, see data sheet of the device under test.

⁽²⁾ These times are as a function of ADC sampling clock periods.

⁽³⁾ For Sticky flags, see the AGC section.

Status Variable

DRC signal threshold flag is set when the Signal exceeds the threshold, so DRC compression becomes active. This flag has both the sticky and non-sticky version.

2.4 Example

Note that for writing to the corresponding register of that variable, just use the syntax w AIC_address Register_address Data where AIC_address is the address of the device under use in Hex, Register_address and Data in Hex.

PGA gain = 12 dB
Threshold = -24 dB
Hysteresis = 3 dB
Hold time = 0 ms

Attack rate = 2.4414×10^{-4} dB per 1/DAC_fS
Decay rate = 3.9062×10^{-3} dB per 1/DAC_fS

Script for the above example considering $F_s=44.1$ kHz with:

```
w 30 00 00 #go to page 0
w 30 41 18 #make gain of Left DAC=12 dB
w 30 42 18 #make gain of right DAC=12 dB
w 30 44 7F #Enable DRC for both DAC channels, set threshold=24dB, Hysteresis= 3dB
w 30 45 00 #Make DRC hold=0 ms
w 30 46 E2 #Make DRC attack and Decay as required
```

Data routing to DAC, powering up the DAC channel and setting up the High-pass and Low-pass filter coefficients are not taken into account and should be written in similar manner after looking at the register concerned from the data sheet.

3 Beep Generator

3.1 Introduction

A special function has also been included in the processing block PRB_P25 for generating a digital sine-wave signal that is sent to the DAC. This is intended for generating key-click sounds for user feedback. The sine wave generator is flexible, and is completely register programmable via 9 registers of 8 bits each to provide many different sounds.

3.2 Beep Generator Parameters

Table 8. Beep Generator Parameters Description

| Variable | Description |
|-----------|---|
| Volume | Left and Right Beep channels have independent volume control register bits. |
| Duration | Bursts of sine and cosine can be generated of duration based on 3 registers which are based on DAC clock periods. |
| Frequency | Any frequency till $f_s/2$ can be generated by writing appropriate value to registers. |

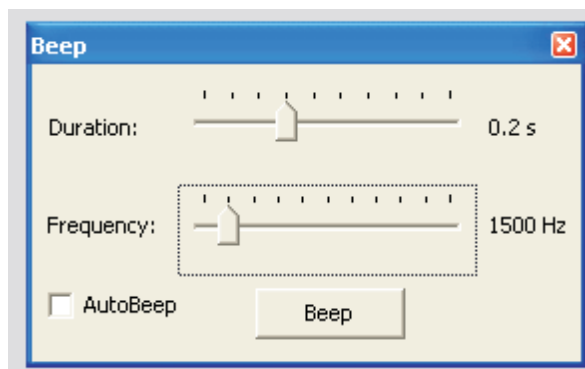
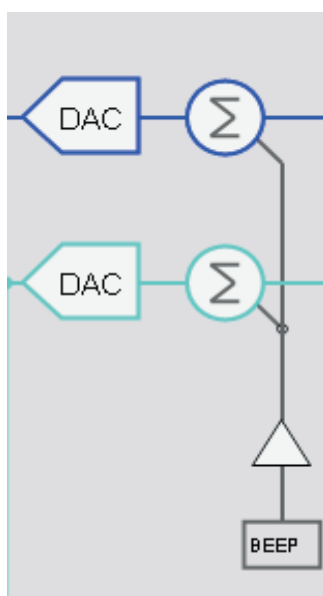


Figure 4. A Snapshot From Control Software Showing GUI Settings for Beep Generator Parameters

3.3 Register Settings

Programming page 0 / register 71 through page 0 / register 79 (8 bits each) completely controls the functionality of this generator and allows for differentiating sounds. Variable and its corresponding register locations can be seen in [Table 9](#).

Table 9. TLV320AIC3204/3254/36/3100/3110/3111/3120 Beep Generator Parameter Settings⁽¹⁾

| Variable | Left DAC Control Register | Right DAC Control Register | Bits |
|---|----------------------------|----------------------------|--------------------------|
| Beep Enable | Page0, Register71 | Page0, Register71 | D7 |
| Volume control | Page0, Register71 | Page0, Register72 | D(5:0), D(7:6) |
| Duration(sample length) | Page0, Register73,74,75 | Page0, Register73,74,75 | 24 bits from 3 registers |
| Frequency(Sin(x) and Cos(x)) ⁽²⁾ | Page0, Register76,77,78,79 | Page0, Register76,77,78,79 | D(7:0) |

⁽¹⁾ For the range of values that can be applied to these parameters, see data sheet of the device under test.

⁽²⁾ Programmed Value for these registers is Beep Sin(x)(7:0), where
Sin(x) = $\sin(2 \times \pi \times \text{Fin}/\text{Fs})$, and Cos(x) = $\cos(2 \times \pi \times \text{Fin}/\text{Fs})$ where Fin is desired beep frequency and Fs is DAC sample rate.

We have Sin(x) and Cos(x) registers to set because the Sine wave tone generated is calculated from Sin and cosine terms from the formula

$$\sin\{(n+1)x\} = 2 \sin(nx)\cos(x) - \sin(n-1)x$$

Where $x = 2 \times \pi \times \text{Fin}/\text{Fs}$ Fin = Desired tone frequency, Fs = Sampling frequency

Now for setting up frequency and beep length, following equations should be used and fed to the registers:

$$\text{Sine} = \text{dec2hex}(\text{round}(\sin(2 \times \pi \times \text{Fin}/\text{Fs}) \times 2^{15}))$$

$$\text{Cosine} = \text{dec2hex}(\text{round}(\cos(2 \times \pi \times \text{Fin}/\text{Fs}) \times 2^{15}))$$

For the above two equations, Fin(desired tone frequency) and Fs is the sampling frequency are known, so Sine and Cosine Coefficients can be calculated and written to registers76,77,78,79.

$$\text{Beep Length} = \text{dec2hex}(\text{floor}(\text{Fs} \times \text{Cycle}/\text{Fin}))$$

Here cycle=number of cycles that are needed for a required time. So, once the duration of beep is known, one can say $N \times T = \text{Time}$ where N=number of cycles and $T = 1/\text{Fin}$. So in this way N can be calculated as T(Beep time period) and Time(Beep Duration) are known. Now these cycles should be wholly related to sampling period. So, from the above equation beep length can be calculated and written in the registers 73,74,75.

3.4 Example

| | LEFT BEEP CONTROL | RIGHT BEEP CONTROL | BEEP LENGTH | | | SINE | | CONSINE | |
|----------|-------------------|--------------------|-------------|-----|-----|------|-----|---------|-----|
| | | | MSB | MID | LSB | MSB | LSB | MSB | LSB |
| REGISTER | 71 | 72 | 73 | 74 | 75 | 76 | 77 | 78 | 79 |

So for 2kHz tone beep for 2 seconds,

Fs=44.1Khz, Fin=2kHz. So using $N \times T = \text{time}$, putting $T = 1/2000$ and time = 2 provides N = 4000.

Now using Beep Length=dec2hex(floor(48 x 4000/2)) = dec2hex(96000) = 0x17700.

So Beep Length = 0x017700 is written in 3 registers 73,74,75.

Now Sine and Cosine coefficients are calculated from equations

Sine=dec2hex(round(Sin($2 \times \pi \times \text{Fin}/\text{Fs}$) x 2^{15})), putting values we get

Sine = dec2hex(round(9211))

Sine = 0x23FB, so Register 76 and 77 are written 0x23 and 0xFB respectively.

Similarly calculating Cosine coefficient

Cosine = 0x7AD7, so registers 78 and 79 are written 0x7A and 0xD7 respectively .

Script for setting up the previous example assuming Fs=48kHz with:

```

w 30 00 00 #go to page 0
w 30 49 01 #Writing Beep length to registers 73,74,75 and 30 being the Codec address.
w 30 4A 77 #73=49 in hex and so on.
w 30 4B 00 #Now writing Sine and cosine coefficients MSB first then LSB in
w 30 4C 23
w 30 4D FB #76,77,78,79
w 30 4E 7A
w 30 4F D7

```

#now that all coefficient settings are done, we can move on to control the volume of left and right channel beep and turn on beep. Assuming Volume of left and right beep= -2dB

```

w 30 48 04 # Making gain of right -2dB and making right and left channel independent
w 30 47 84 #Making gain of left channel -2dB and turning on the beep.

```

DAC settings are not taken in account here.

4 References

1. Ultra low power Stereo Audio codec TLV320AIC3204 data sheet ([SLOS602A](#)).
2. Ultra low power Stereo Audio codec with embedded mini-DSP TLV320AIC3254 data sheet ([SLAS549A](#)).
3. Low-Power Audio Codec with Audio Processing and Mono Class-D Amplifier data sheet TLV320AIC3100 ([SLAS667](#)).
4. Low-Power Audio Codec with Audio Processing and Stereo Class-D Speaker Amplifier TLV320AIC3110 data sheet ([SLAS647](#)).
5. Low-Power Audio Codec with Embedded mini-DSP and Stereo Class-D Speaker Amplifier TLV320AIC3111 data sheet ([SLAS644B](#)).
6. Low-Power Mono Audio Codec with Embedded mini-DSP and Mono Class-D Speaker Amplifier TLV320AIC3120 data sheet ([SLAS653](#)).
7. Low Power Stereo Audio Codec with Embedded mini-DSP TLV320AIC36 data sheet ([SBAS387](#)).

Appendix A Sample Code

Here is a sample code for the user for the entire Codec setup for the registers for ADC, DRC and Beep Generator assuming device under use is TLV320AIC3111, Sampling frequency=44.1kHz and the following parameters:

AGC

Target gain = -10 dB
 Attack time = 20 ms and decay time = 500 ms
 Noise threshold = -90 dB
 Maximum gain applicable= 40 dB
 Hysteresis = 2 dB
 Debounce time from normal to silence = 2 ms
 Debounce time from silence to normal = 0 ms.

DRC

PGA gain = 12 dB
 Threshold = -24 dB
 Hysteresis = 3 dB
 Hold time = 0 ms
 Attack rate = 2.4414×10^{-4} dB per 1/DAC_fs
 Decay rate = 3.9062×10^{-3} dB per 1/DAC_fs

Beep Generator

Tone frequency=2kHz
 Beep length=2sec

Start of the
 code

```
w 30 00 00    #select page0
w 30 01 01    #software reset
w 30 04 07    #Set PLL_CLKIN=BLCK and CODEC_CLKIN=PLL_CLK
w 30 05 91    #PLL powered up, set PLL variable P=R=1
w 30 06 20    #Set PLL variable J=32
w 30 07 00    # Set PLL variable D(msb)=0
w 30 08 00    # D(lsb)=0
w 30 1B 01    # Mode=I2S, Word length=16, BCLK, WCLK are inputs to codec.
w 30 0B 84    #NDAC powered up and set to 4
w 30 0C 84    #MDAC powered up and set to 4
w 30 0D 00    #DOSR=128, DOSR(9:8)=0
w 30 0E 80    #DOSR(7:0)=128
w 30 12 84    #NADC powered up and set to 4
w 30 13 84    #MADC powered up and set to 4
w 30 14 80    #AOSR=128
w 30 3C 19    #DAC PRB set to PRB_P19
w 30 3D 04    # ADC PRB set to PRB_R4
w 30 3F D6    #Set the DAC datapath
w 30 00 01    #page 1 is selected
w 30 21 46    # De-pop, Driver power-on time=600ms, Step time=4ms
w 30 1F C6    #Power on HP drivers
w 30 23 88    #DAC_L routed to HPL, DAC_R routed to HPR
w 30 28 0E    #HPL driver unmuted and gain set to 1dB
```

```

w 30 29 0E    # HPR driver unmuted and gain set to 1dB
w 30 24 00    #Analog Volume control gain set to 0dB for HPL
w 30 25 00    # Analog Volume control gain set to 0dB for HPR
w 30 2E 0B    #MICBIAS=AVDD
w 30 30 40    #MIC with Rin=10k
w 30 31 40    #CM with Rin=10k
w 30 40 0C    #DAC unmated
w 30 51 80    #Power ADC channel
w 30 52 00    #Unmute ADC channel
#AGC settings
w 30 00 00    #go to page 0
w 30 56 A0    #Enable AGC, set Target gain= -10dB
w 30 57 7E    #set hysteresis=2dB, Noise threshold=-90dB
w 30 58 50    #set Maximum gain=40dB
w 30 59 08    #set attack time=20ms
w 30 5A 32    #Decay time=500ms
w 30 5B 00    #Noise debounce time=0ms
w 30 5C 06    #signal debounce time=2ms
#DRC settings
w 30 00 00    # go to page 0
w 30 41 18    #make gain of Left DAC=12 dB
w 30 42 18    #make gain of right DAC=12 dB
w 30 44 7F    #Enable DRC for both DAC channels, set threshold=24dB, Hysteresis= 3dB
w 30 45 00    #Make DRC hold=0 ms
w 30 46 E2    #Make DRC attack and Decay as required
#Beep Generator settings
w 30 00 00    # go to page 0
w 30 49 01    #Writing Beep length to registers 73,74,75 and 30 being the Codec address.
w 30 4A 77    #73=49 in hex and so on.
w 30 4B 00
w 30 4C 23    #Now writing Sine and cosine coefficients MSB first then LSB in register
w 30 4D FB    #76,77,78,79
w 30 4E 7A
w 30 4F D7
#now that all coefficient settings are done, we can move on to control the volume of left and right
channel beep and turn on beep. Lets assume Volume of left and right beep= -2dB
w 30 48 04    # Making gain of right -2dB and making right and left channel independent
w 30 47 84    #Making gain of left channel -2dB and turning on the beep.

##End of Code##

```

IMPORTANT NOTICE

Texas Instruments Incorporated and its subsidiaries (TI) reserve the right to make corrections, modifications, enhancements, improvements, and other changes to its products and services at any time and to discontinue any product or service without notice. Customers should obtain the latest relevant information before placing orders and should verify that such information is current and complete. All products are sold subject to TI's terms and conditions of sale supplied at the time of order acknowledgment.

TI warrants performance of its hardware products to the specifications applicable at the time of sale in accordance with TI's standard warranty. Testing and other quality control techniques are used to the extent TI deems necessary to support this warranty. Except where mandated by government requirements, testing of all parameters of each product is not necessarily performed.

TI assumes no liability for applications assistance or customer product design. Customers are responsible for their products and applications using TI components. To minimize the risks associated with customer products and applications, customers should provide adequate design and operating safeguards.

TI does not warrant or represent that any license, either express or implied, is granted under any TI patent right, copyright, mask work right, or other TI intellectual property right relating to any combination, machine, or process in which TI products or services are used. Information published by TI regarding third-party products or services does not constitute a license from TI to use such products or services or a warranty or endorsement thereof. Use of such information may require a license from a third party under the patents or other intellectual property of the third party, or a license from TI under the patents or other intellectual property of TI.

Reproduction of TI information in TI data books or data sheets is permissible only if reproduction is without alteration and is accompanied by all associated warranties, conditions, limitations, and notices. Reproduction of this information with alteration is an unfair and deceptive business practice. TI is not responsible or liable for such altered documentation. Information of third parties may be subject to additional restrictions.

Resale of TI products or services with statements different from or beyond the parameters stated by TI for that product or service voids all express and any implied warranties for the associated TI product or service and is an unfair and deceptive business practice. TI is not responsible or liable for any such statements.

TI products are not authorized for use in safety-critical applications (such as life support) where a failure of the TI product would reasonably be expected to cause severe personal injury or death, unless officers of the parties have executed an agreement specifically governing such use. Buyers represent that they have all necessary expertise in the safety and regulatory ramifications of their applications, and acknowledge and agree that they are solely responsible for all legal, regulatory and safety-related requirements concerning their products and any use of TI products in such safety-critical applications, notwithstanding any applications-related information or support that may be provided by TI. Further, Buyers must fully indemnify TI and its representatives against any damages arising out of the use of TI products in such safety-critical applications.

TI products are neither designed nor intended for use in military/aerospace applications or environments unless the TI products are specifically designated by TI as military-grade or "enhanced plastic." Only products designated by TI as military-grade meet military specifications. Buyers acknowledge and agree that any such use of TI products which TI has not designated as military-grade is solely at the Buyer's risk, and that they are solely responsible for compliance with all legal and regulatory requirements in connection with such use.

TI products are neither designed nor intended for use in automotive applications or environments unless the specific TI products are designated by TI as compliant with ISO/TS 16949 requirements. Buyers acknowledge and agree that, if they use any non-designated products in automotive applications, TI will not be responsible for any failure to meet such requirements.

Following are URLs where you can obtain information on other Texas Instruments products and application solutions:

| Products | | Applications | |
|-----------------------------|--|----------------------------|--|
| Amplifiers | amplifier.ti.com | Audio | www.ti.com/audio |
| Data Converters | dataconverter.ti.com | Automotive | www.ti.com/automotive |
| DLP® Products | www.dlp.com | Communications and Telecom | www.ti.com/communications |
| DSP | dsp.ti.com | Computers and Peripherals | www.ti.com/computers |
| Clocks and Timers | www.ti.com/clocks | Consumer Electronics | www.ti.com/consumer-apps |
| Interface | interface.ti.com | Energy | www.ti.com/energy |
| Logic | logic.ti.com | Industrial | www.ti.com/industrial |
| Power Mgmt | power.ti.com | Medical | www.ti.com/medical |
| Microcontrollers | microcontroller.ti.com | Security | www.ti.com/security |
| RFID | www.ti-rfid.com | Space, Avionics & Defense | www.ti.com/space-avionics-defense |
| RF/IF and ZigBee® Solutions | www.ti.com/lprf | Video and Imaging | www.ti.com/video |
| | | Wireless | www.ti.com/wireless-apps |