

# How to Estimate the Output Voltage Ranges of the Charge Pumps in the TPS65150

Nigel Smith

## ABSTRACT

This application report tells you how to estimate the output voltage range of the charge pumps in the TPS65150. It assumes that the output current from each charge pump is 25 mA, or less.

This application report was written specifically for the TPS65150, but the principles in it are applicable to all devices that use the same charge-pump topology.

## 1 Introduction

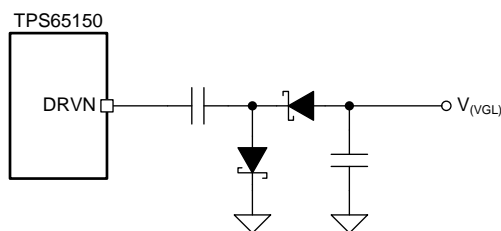
The TPS65150 contains driver circuitry for a positive charge pump and a negative charge pump. The device regulates the output voltage of the charge pumps, if the output voltage is in the permitted range. The application circuit and the operating conditions set the permitted range of output voltages.

The mathematics used in the estimation is not complicated, but if you just want the answers, go straight to [Figure 2](#) and [Figure 5](#).

This application report assumes that the standard application circuits from the data sheet of the TPS65150 ([SLVS576](#)) are used.

## 2 Negative Charge Pump

Most TPS65150 application circuits use the one-stage negative charge-pump circuit shown in [Figure 1](#). More than one stage can be used to generate more negative voltages, but few LCDs need such negative voltages and therefore they are not discussed here.



**Figure 1. One-Stage Negative Charge-Pump Circuit**

The minimum (that is, most negative) output voltage that this circuit can generate is given by:

$$V_{(VGL)}(\min) \approx -(V_{(VS)} - 2 V_F - V_{(DRVN)}) \quad (1)$$

where

- $V_{(VS)}$  is the output voltage of the boost converter
- $V_F$  is the forward voltage of the diodes
- $V_{(DRVN)}$  is the voltage drop across the current sink in the negative charge-pump driver circuit

The values of  $V_F$  and  $V_{(DRVN)}$  increase as the output current increases. The negative charge pump in the TPS65150 device operates with a 50% duty cycle, so the peak current in the diodes and the current sink is two times the output current. Thus, for output currents up to 25 mA, the peak current is 50 mA and

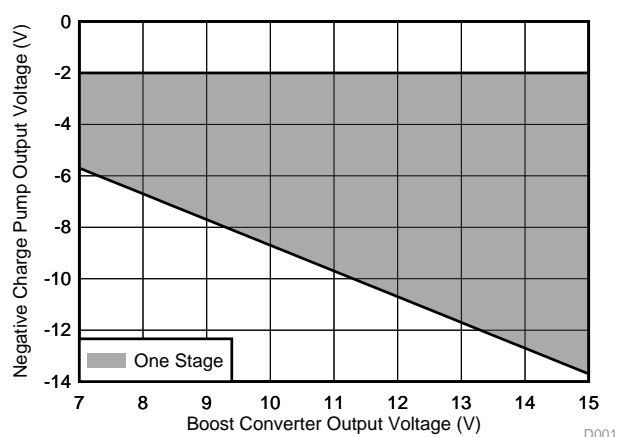
- $V_F = 0.5 \text{ V}$  (taken from the data sheet of the BAT54 <sup>(1)</sup> diode)
- $V_{(DRVN)} = 0.13 \text{ V}$  (taken from the data sheet of the TPS65150 device)

Using these values, the minimum output voltage is given by:

$$V_{(VGL)}(\min) \approx -(V_{(VS)} - 1.13 \text{ V}) \quad (2)$$

The data sheet of the TPS65150 specifies that the maximum (that is, least negative) output voltage the negative charge pump can generate is  $-2 \text{ V}$ .

Figure 2 is a graphic representation of the range of output voltages that the negative charge pump in the TPS65150 device can generate.



**Figure 2. Negative Charge-Pump Output Voltage Range**

Ensure that the output voltage of the negative charge pump in your application is in the gray area of Figure 2.

The bottom boundary of the gray area also tells you what output you will get if you try to generate an output voltage below the permitted range.

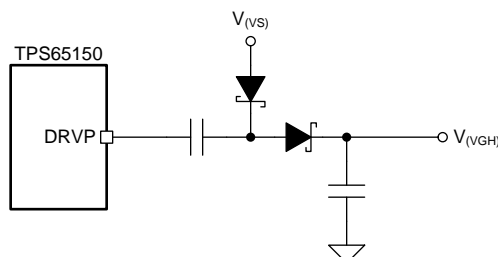
For example, if  $V_{(VS)} = 11 \text{ V}$  and you try to generate  $V_{(VGL)} = -12 \text{ V}$ , you will get about  $-9.7 \text{ V}$  (found by following the  $V_{(VS)} = 11 \text{ V}$  grid line up until it hits the bottom boundary of the gray area).

<sup>(1)</sup> The BAT54 diode is commonly used in charge-pump circuits, but other diodes are available. If you use a different diode, make sure you use the correct value for  $V_F$ .

### 3 Positive Charge Pump

Many LCD applications can use the positive charge pump of the TPS65150 in a one-stage configuration. Applications that need a higher  $V_{(VGH)}$  voltage than a one-stage charge pump can generate must use a two-stage configuration.

#### 3.1 One-Stage Positive Charge Pump



**Figure 3. One-Stage Positive Charge-Pump Circuit**

The maximum output voltage that a one-stage charge pump can generate is given by:

$$V_{(VGH)}(\text{max}) \approx 2 V_{(VS)} - 2 V_F - (V_{(SUP)} - V_{(DRV)}) \quad (3)$$

where

- $V_{(VS)}$  is the output voltage of the boost converter
- $V_F$  is the forward voltage of the diodes
- $V_{(SUP)} - V_{(DRV)}$  is the voltage drop across the current source in the positive charge-pump driver circuit

The values of  $V_F$  and  $V_{(SUP)} - V_{(DRV)}$  increase as the output current increases. The positive charge pump operates with a 50% duty cycle, so the peak current in the diodes and the current source is two times the output current. Thus, for output currents up to 25 mA, the peak current is 50 mA, and

- $V_F = 0.5 \text{ V}$  (taken from the data sheet of the BAT54 diode)
- $V_{(SUP)} - V_{(DRV)} = 0.42 \text{ V}$  (taken from the data sheet of the TPS65150 device)

Using these values, the maximum output voltage is given by:

$$V_{(VGH)}(\text{max}) \approx 2 V_{(VS)} - 1.42 \text{ V} \quad (4)$$

The minimum output voltage for a one-stage charge pump is given by:

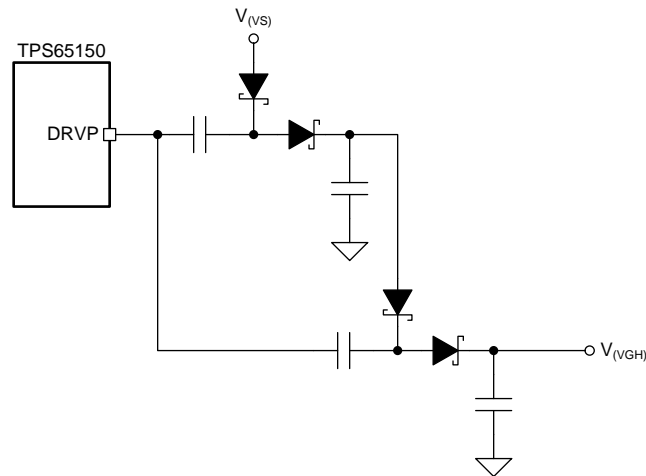
$$V_{GH}(\text{min}) \approx V_{(VS)} - 2 V_F \quad (5)$$

and if  $V_F = 0.5 \text{ V}$ ,

$$V_{GH}(\text{min}) \approx V_{(VS)} - 1 \text{ V} \quad (6)$$

### 3.2 Two-Stage Positive Charge Pump

If your application needs a higher voltage for  $V_{(VGH)}$  than a one-stage charge pump can generate, you must use the two-stage circuit shown in Figure 4.



**Figure 4. Two-Stage Positive Charge-Pump Circuit**

**NOTE:** Be aware that the output current of a *Two-Stage Positive Charge Pump* is only half the current of a *One-Stage Charge Pump* if the second stage is as well driven by the DRVP pin. If the same output current is needed, the SW pin of the TPS65150 could drive the second stage. The calculation formulas for the estimated output voltage then slightly changes.

The maximum output voltage of the two-stage charge-pump circuit is given by:

$$V_{(VGH)}(\max) \approx 3 V_{(VS)} - 4 V_F - 2(V_{(SUP)} - V_{(DRVP)}) \quad (7)$$

The values for  $V_F$  and  $V_{(SUP)} - V_{(DRVP)}$  increase as the output current increases. In a two-stage charge pump with output currents up to 25 mA, the peak current in each diode is 50 mA, but the peak current from the DRVP pin is 100 mA (because it drives *two* charge-pump stages). Thus,

- $V_F = 0.5 \text{ V}$  (taken from the data sheet of the BAT54 diode)
- $V_{(SUP)} - V_{(DRVP)} = 0.9 \text{ V}$  (taken from the data sheet of the TPS65150 device)

Using these values, the maximum output voltage is given by:

$$V_{(VGH)}(\max) \approx 3 V_{(VS)} - 3.8 \text{ V} \quad (8)$$

Note that the data sheet of the TPS65150 device specifies a maximum value for  $V_{(V_{GH})}$  of 30 V. Even if [Equation 8](#) says you can generate higher output voltages in your application, the maximum output voltage in practice is 30 V.

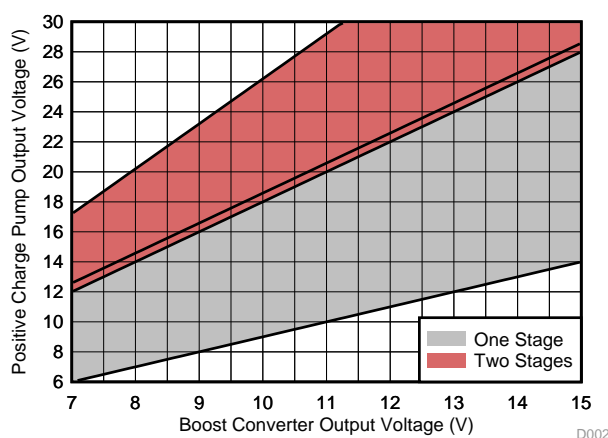
The minimum output voltage for a two-stage charge pump is given by:

$$V_{GH}(\min) \approx 2 V_{(V_S)} - 4 V_F, \quad (9)$$

and if  $V_F = 0.5 \text{ V}$

$$V_{GH}(\min) \approx 2 V_{(V_S)} - 2 \text{ V} \quad (10)$$

[Figure 5](#) shows a graphical representation of the output voltages that the TPS65150 device can generate in one- and two-stage configurations. The dark area between the gray and the red areas indicates an overlap of the two ranges.



**Figure 5. Positive Charge Pump Output Voltage Ranges**

If you use a one-stage charge pump, make sure that the output voltage of the positive charge pump is in the gray area of [Figure 5](#).

If you use a two-stage charge pump, you must make sure that the output voltage is in the red area of [Figure 5](#).

The boundaries of each area also indicate what output you will get if you try to generate an output voltage outside the permitted range. For example:

- If  $V_{(V_S)} = 11 \text{ V}$  and you try to generate  $V_{(V_{GH})} = 24 \text{ V}$  with a one-stage charge pump, you will get about 20.6 V (found by following the  $V_{(V_S)} = 11 \text{ V}$  grid line up until it hits the top boundary of the gray area)
- If  $V_{(V_S)} = 11 \text{ V}$  and you try to generate  $V_{(V_{GH})} = 16 \text{ V}$  with a two-stage charge pump you will get about 20 V (found by following the  $V_{(V_S)} = 11 \text{ V}$  grid line up until it hits the bottom boundary of the gray area)

## 4 Summary

The charge pumps in the TPS65150 can regulate the output voltage if it is in the permitted range. Use [Figure 2](#) and [Figure 5](#) in this document to see the permitted output voltage range of your application. If your application operates close to the edge of the permitted range, make sure that your design has enough margin to operate correctly under all conditions.

## IMPORTANT NOTICE FOR TI DESIGN INFORMATION AND RESOURCES

Texas Instruments Incorporated ("TI") technical, application or other design advice, services or information, including, but not limited to, reference designs and materials relating to evaluation modules, (collectively, "TI Resources") are intended to assist designers who are developing applications that incorporate TI products; by downloading, accessing or using any particular TI Resource in any way, you (individually or, if you are acting on behalf of a company, your company) agree to use it solely for this purpose and subject to the terms of this Notice.

TI's provision of TI Resources does not expand or otherwise alter TI's applicable published warranties or warranty disclaimers for TI products, and no additional obligations or liabilities arise from TI providing such TI Resources. TI reserves the right to make corrections, enhancements, improvements and other changes to its TI Resources.

You understand and agree that you remain responsible for using your independent analysis, evaluation and judgment in designing your applications and that you have full and exclusive responsibility to assure the safety of your applications and compliance of your applications (and of all TI products used in or for your applications) with all applicable regulations, laws and other applicable requirements. You represent that, with respect to your applications, you have all the necessary expertise to create and implement safeguards that (1) anticipate dangerous consequences of failures, (2) monitor failures and their consequences, and (3) lessen the likelihood of failures that might cause harm and take appropriate actions. You agree that prior to using or distributing any applications that include TI products, you will thoroughly test such applications and the functionality of such TI products as used in such applications. TI has not conducted any testing other than that specifically described in the published documentation for a particular TI Resource.

You are authorized to use, copy and modify any individual TI Resource only in connection with the development of applications that include the TI product(s) identified in such TI Resource. NO OTHER LICENSE, EXPRESS OR IMPLIED, BY ESTOPPEL OR OTHERWISE TO ANY OTHER TI INTELLECTUAL PROPERTY RIGHT, AND NO LICENSE TO ANY TECHNOLOGY OR INTELLECTUAL PROPERTY RIGHT OF TI OR ANY THIRD PARTY IS GRANTED HEREIN, including but not limited to any patent right, copyright, mask work right, or other intellectual property right relating to any combination, machine, or process in which TI products or services are used. Information regarding or referencing third-party products or services does not constitute a license to use such products or services, or a warranty or endorsement thereof. Use of TI Resources may require a license from a third party under the patents or other intellectual property of the third party, or a license from TI under the patents or other intellectual property of TI.

TI RESOURCES ARE PROVIDED "AS IS" AND WITH ALL FAULTS. TI DISCLAIMS ALL OTHER WARRANTIES OR REPRESENTATIONS, EXPRESS OR IMPLIED, REGARDING TI RESOURCES OR USE THEREOF, INCLUDING BUT NOT LIMITED TO ACCURACY OR COMPLETENESS, TITLE, ANY EPIDEMIC FAILURE WARRANTY AND ANY IMPLIED WARRANTIES OF MERCHANTABILITY, FITNESS FOR A PARTICULAR PURPOSE, AND NON-INFRINGEMENT OF ANY THIRD PARTY INTELLECTUAL PROPERTY RIGHTS.

TI SHALL NOT BE LIABLE FOR AND SHALL NOT DEFEND OR INDEMNIFY YOU AGAINST ANY CLAIM, INCLUDING BUT NOT LIMITED TO ANY INFRINGEMENT CLAIM THAT RELATES TO OR IS BASED ON ANY COMBINATION OF PRODUCTS EVEN IF DESCRIBED IN TI RESOURCES OR OTHERWISE. IN NO EVENT SHALL TI BE LIABLE FOR ANY ACTUAL, DIRECT, SPECIAL, COLLATERAL, INDIRECT, PUNITIVE, INCIDENTAL, CONSEQUENTIAL OR EXEMPLARY DAMAGES IN CONNECTION WITH OR ARISING OUT OF TI RESOURCES OR USE THEREOF, AND REGARDLESS OF WHETHER TI HAS BEEN ADVISED OF THE POSSIBILITY OF SUCH DAMAGES.

You agree to fully indemnify TI and its representatives against any damages, costs, losses, and/or liabilities arising out of your non-compliance with the terms and provisions of this Notice.

This Notice applies to TI Resources. Additional terms apply to the use and purchase of certain types of materials, TI products and services. These include; without limitation, TI's standard terms for semiconductor products (<http://www.ti.com/sc/docs/stdterms.htm>), [evaluation modules](#), and [samples](http://www.ti.com/sc/docs/sampterm.htm) (<http://www.ti.com/sc/docs/sampterm.htm>).

Mailing Address: Texas Instruments, Post Office Box 655303, Dallas, Texas 75265  
Copyright © 2017, Texas Instruments Incorporated