

Voltage Monitoring with Programmable Reset Assertion Timing Using the TPS3899



Logan Cable

This technical note expands on the [Programmable Push-Button, Pulse Detector, and Pulse Generator Solutions \(SBVA061\)](#) applications note and discusses the sense delay programmable timing feature added with the TPS3899 voltage supervisor.

The sense delay is the delay time for which the sense voltage needs to be under the voltage threshold in order to assert a reset. On previous TI voltage supervisors this delay was small and fixed, however, on the TPS3899, sense delay time can be programmed from several hundred microseconds up to several seconds.

There are many applications for which a sense delay would be useful. One application of sense delay is minimum pulse width detection which is useful for push-button holding functionality, control systems, communications, timing measurement devices, and timing fault detections. Another application is preventing false resets on noisy voltages.

Push-Button with Holding Requirements

One application of minimum pulse width detection using the TPS3899 is a push-button that needs to be held for a duration of time in order to activate.

Voltage supervisors when used for push-button programming typically have programmability on the deassertion of a reset but not on the assertion of a reset. The TPS3899 voltage supervisor has the CTR pin for programming deassertion delay (reset delay) and the additional CTS pin for programming assertion delay (sense delay).

Using the TPS3899, a push-button can now be programmed to have a user-customized hold requirement before the signal can be asserted. The typical topology of this circuit using the open-drain active low variant of TPS3899 is shown in [Figure 1-1](#) (Note: If using the push-pull variants pull-up resistor on the reset output will need to be removed).

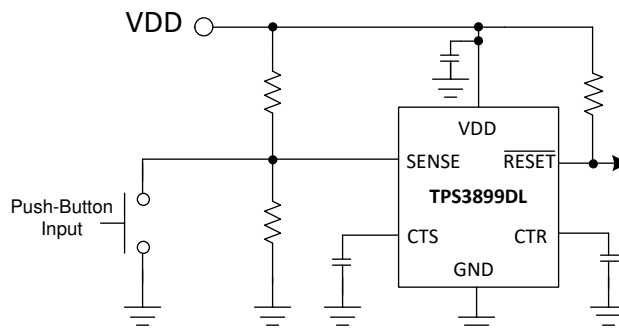


Figure 1. Programmable Push-button Circuit Using TPS3899

The $\overline{\text{RESET}}$ output will be inputted to the desired device as a “button pressed” signal and will only be asserted if the push-button is held down for the minimum length of programmed time. The push-button is connected to the sense pin and ground.

When pressed, the push-button will tie the sense pin to ground causing V_{SENSE} to be lower than the input threshold voltage. If the button is pressed for the duration of t_{SENSE} , then the $\overline{\text{RESET}}$ output will assert. After the button is released, the $\overline{\text{RESET}}$ output will deassert after the duration of t_{RESET} . See [Figure 1-2](#) for the timing diagram of a button press.

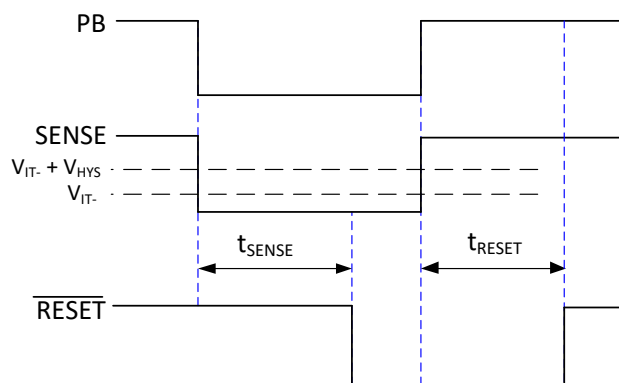


Figure 2. Programmable Push-button Circuit Timing Diagram

t_{SENSE} and t_{RESET} are programmed through the capacitor values placed on the CTS and CTR pins respectively. Placing a larger capacitor on the pin increases the delays and placing a smaller capacitor decreases the delay.

See [Table 1](#) for example options on the push-button timing. By adjusting the capacitor on CTS, the hold requirement for the push-button changes. For example, placing a 10 μ F capacitor on CTS makes the hold requirement for the push-button 6.19s.

Table 1-1. Programmable Delay on CTS and CTR

	t_{SENSE} (Sense Delay)	t_{RESET} (Reset Delay)
CTS = 0.1 μ F, CTR = 0.1 μ F	61.9ms	61.9ms
CTS = 1 μ F, CTR = 1 μ F	619ms	619ms
CTS = 10 μ F, CTR = 10 μ F (max.)	6.19s	6.19s

IMPORTANT NOTICE AND DISCLAIMER

TI PROVIDES TECHNICAL AND RELIABILITY DATA (INCLUDING DATA SHEETS), DESIGN RESOURCES (INCLUDING REFERENCE DESIGNS), APPLICATION OR OTHER DESIGN ADVICE, WEB TOOLS, SAFETY INFORMATION, AND OTHER RESOURCES "AS IS" AND WITH ALL FAULTS, AND DISCLAIMS ALL WARRANTIES, EXPRESS AND IMPLIED, INCLUDING WITHOUT LIMITATION ANY IMPLIED WARRANTIES OF MERCHANTABILITY, FITNESS FOR A PARTICULAR PURPOSE OR NON-INFRINGEMENT OF THIRD PARTY INTELLECTUAL PROPERTY RIGHTS.

These resources are intended for skilled developers designing with TI products. You are solely responsible for (1) selecting the appropriate TI products for your application, (2) designing, validating and testing your application, and (3) ensuring your application meets applicable standards, and any other safety, security, regulatory or other requirements.

These resources are subject to change without notice. TI grants you permission to use these resources only for development of an application that uses the TI products described in the resource. Other reproduction and display of these resources is prohibited. No license is granted to any other TI intellectual property right or to any third party intellectual property right. TI disclaims responsibility for, and you will fully indemnify TI and its representatives against, any claims, damages, costs, losses, and liabilities arising out of your use of these resources.

TI's products are provided subject to [TI's Terms of Sale](#) or other applicable terms available either on [ti.com](#) or provided in conjunction with such TI products. TI's provision of these resources does not expand or otherwise alter TI's applicable warranties or warranty disclaimers for TI products.

TI objects to and rejects any additional or different terms you may have proposed.

Mailing Address: Texas Instruments, Post Office Box 655303, Dallas, Texas 75265
Copyright © 2022, Texas Instruments Incorporated